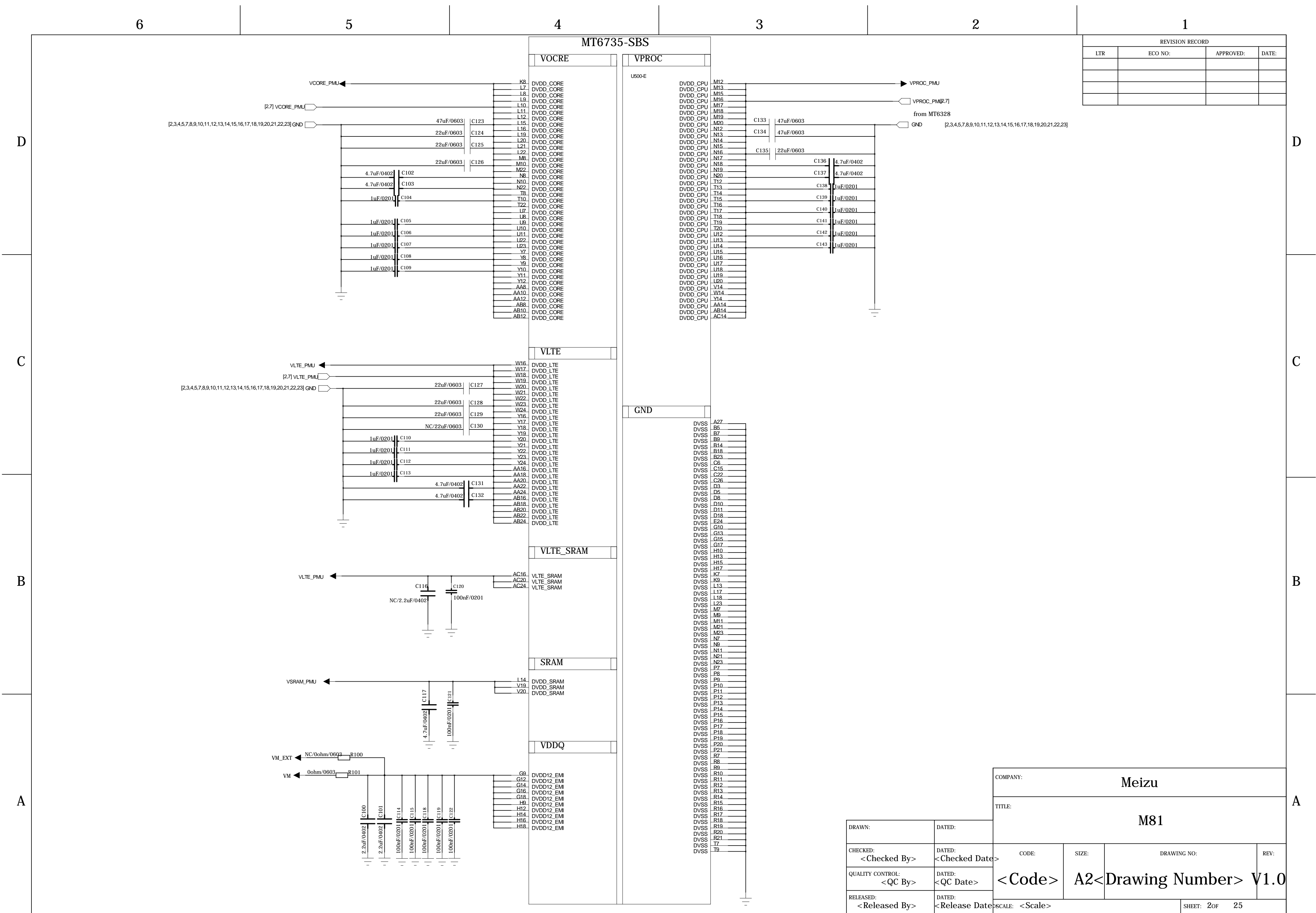


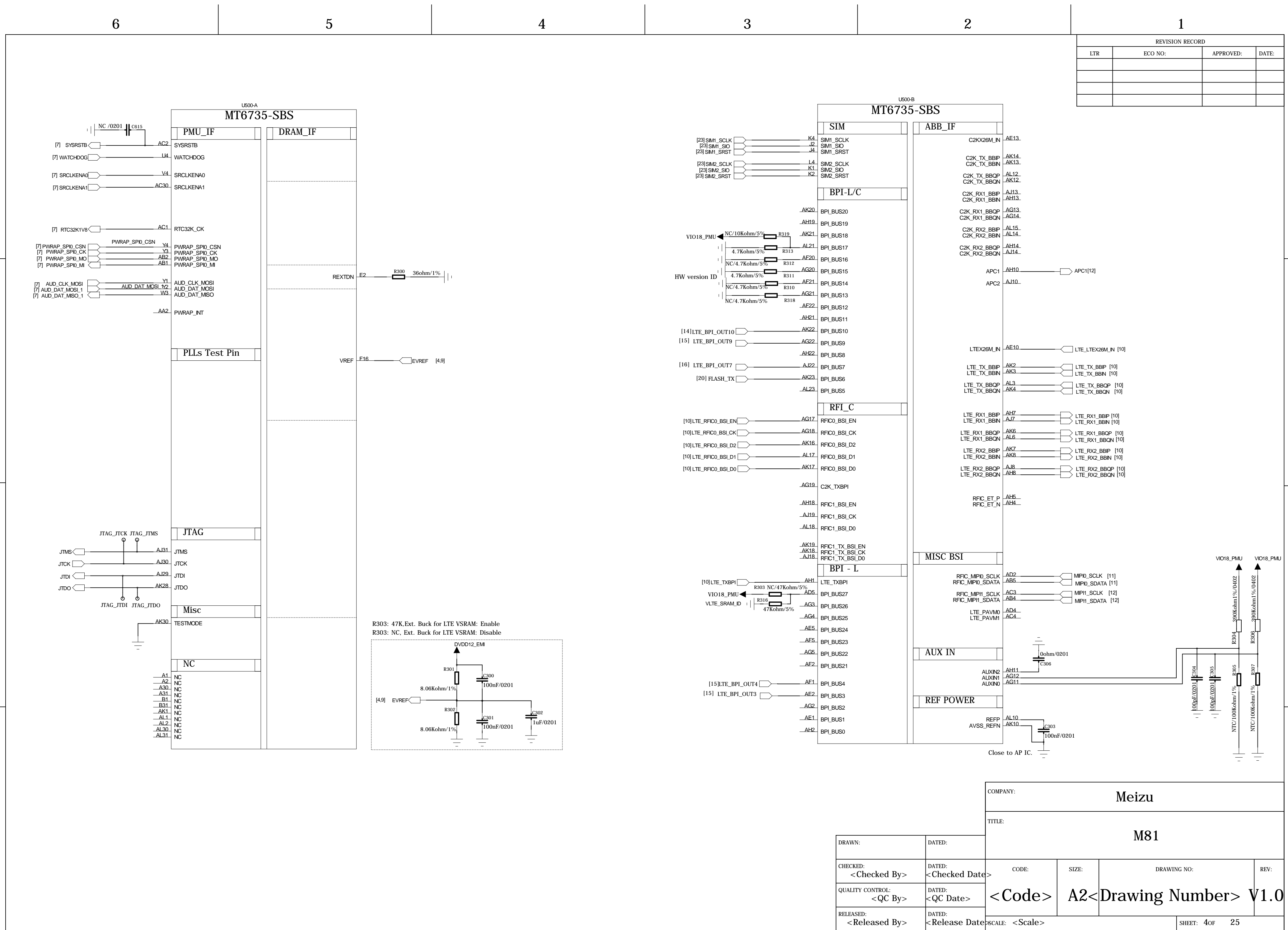
REVISION RECORD			
LTR	ECO NO:	APPROVED:	DATE:

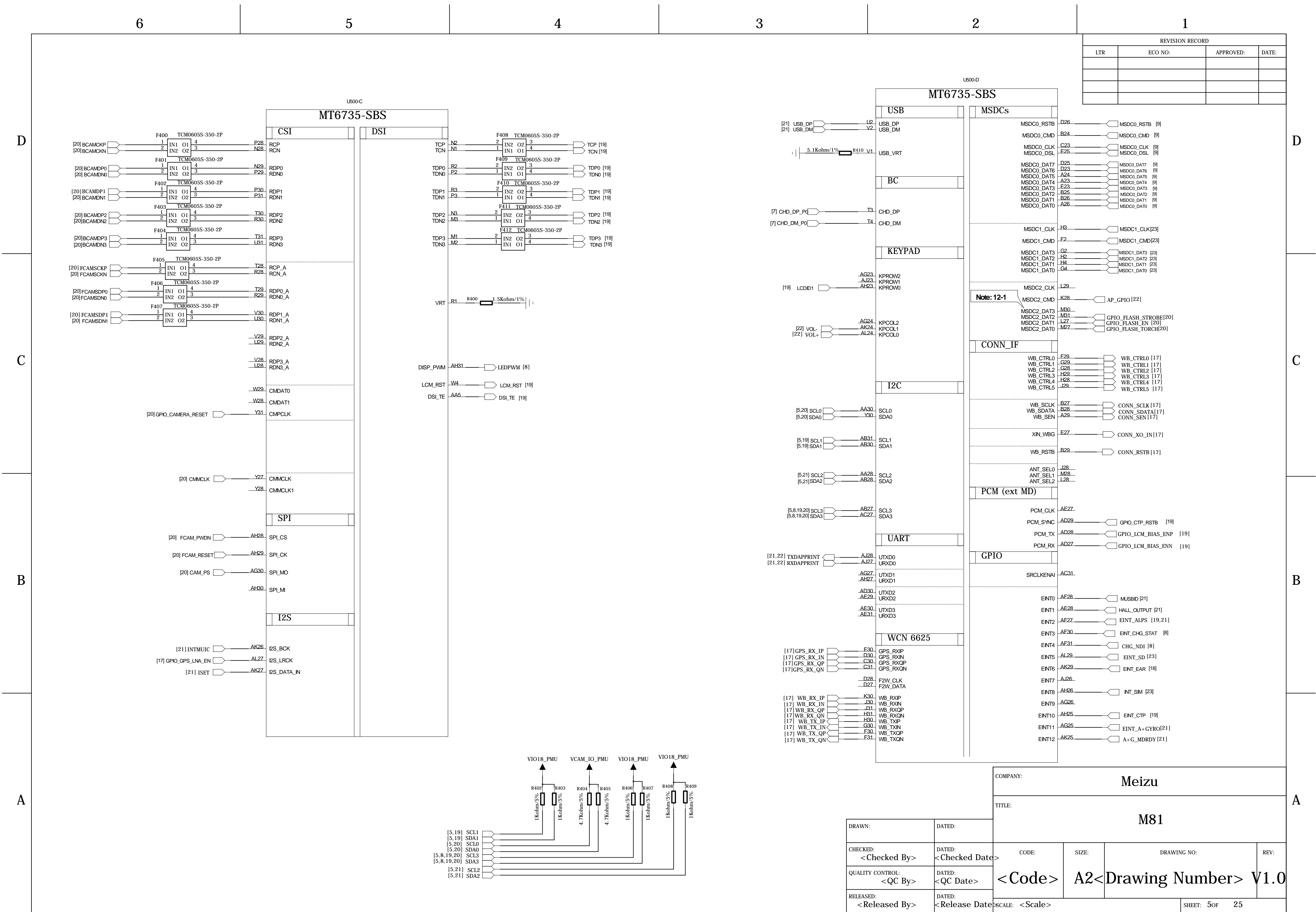
COMPANY: Meizu			
TITLE: M81			
CODE: <Code>	SIZE: A2	DRAWING NO: <Drawing Number>	REV: V1.0
SCALE: <Scale>			SHEET: 1 of 25

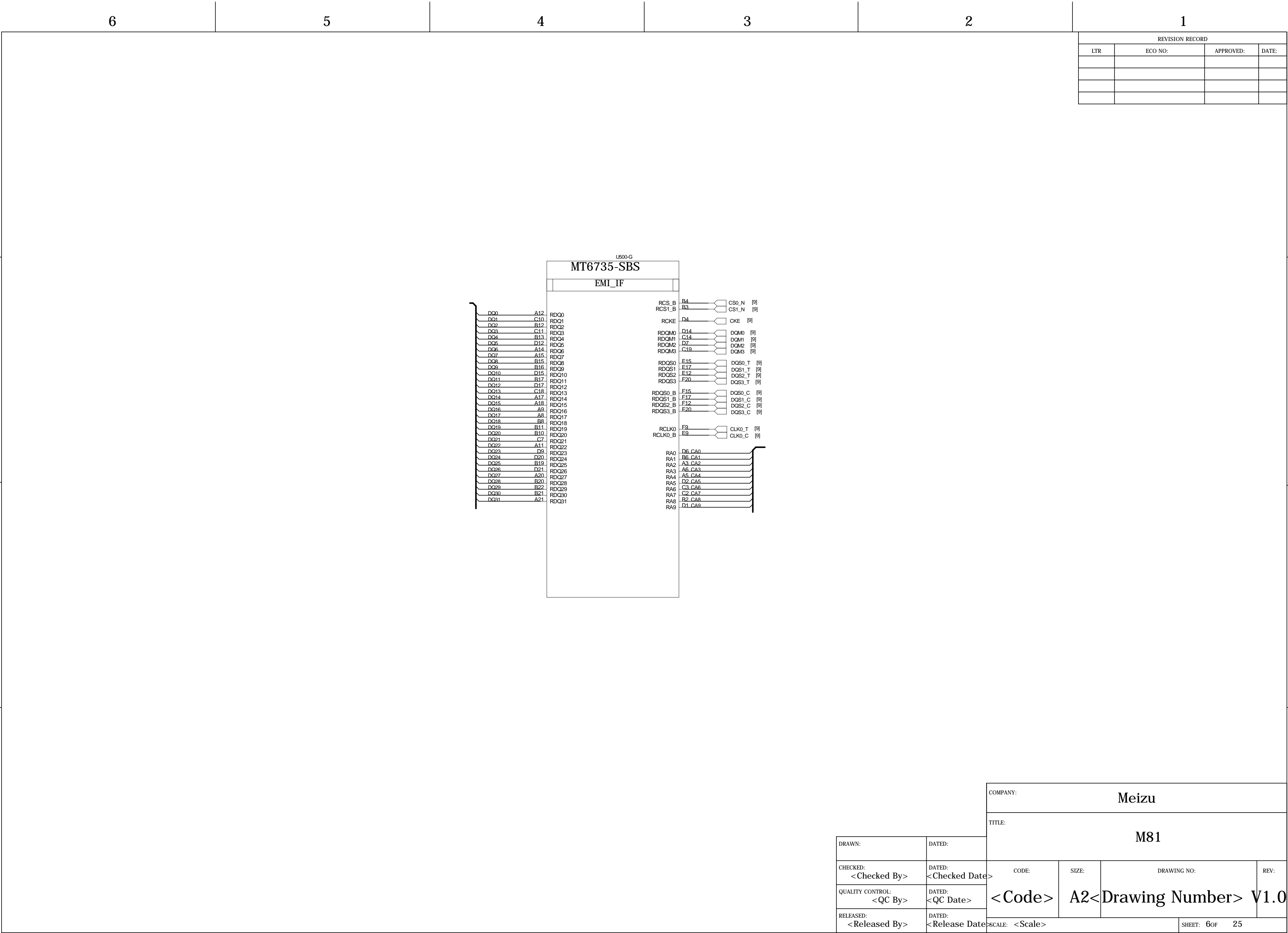
DRAWN:	DATED:
CHECKED: <Checked By>	DATED: <Checked Date>
QUALITY CONTROL: <QC By>	DATED: <QC Date>
RELEASED: <Released By>	DATED: <Release Date>

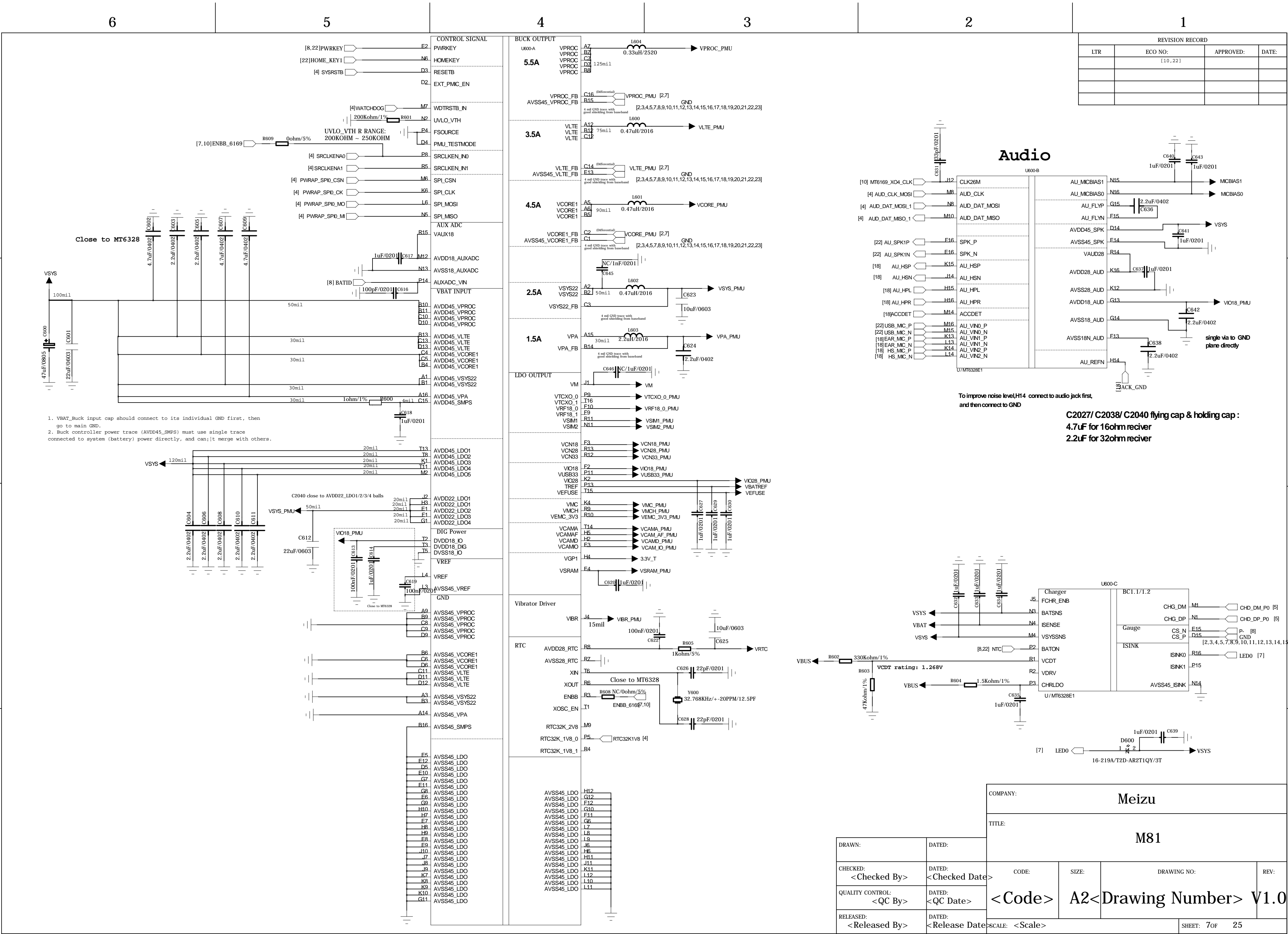






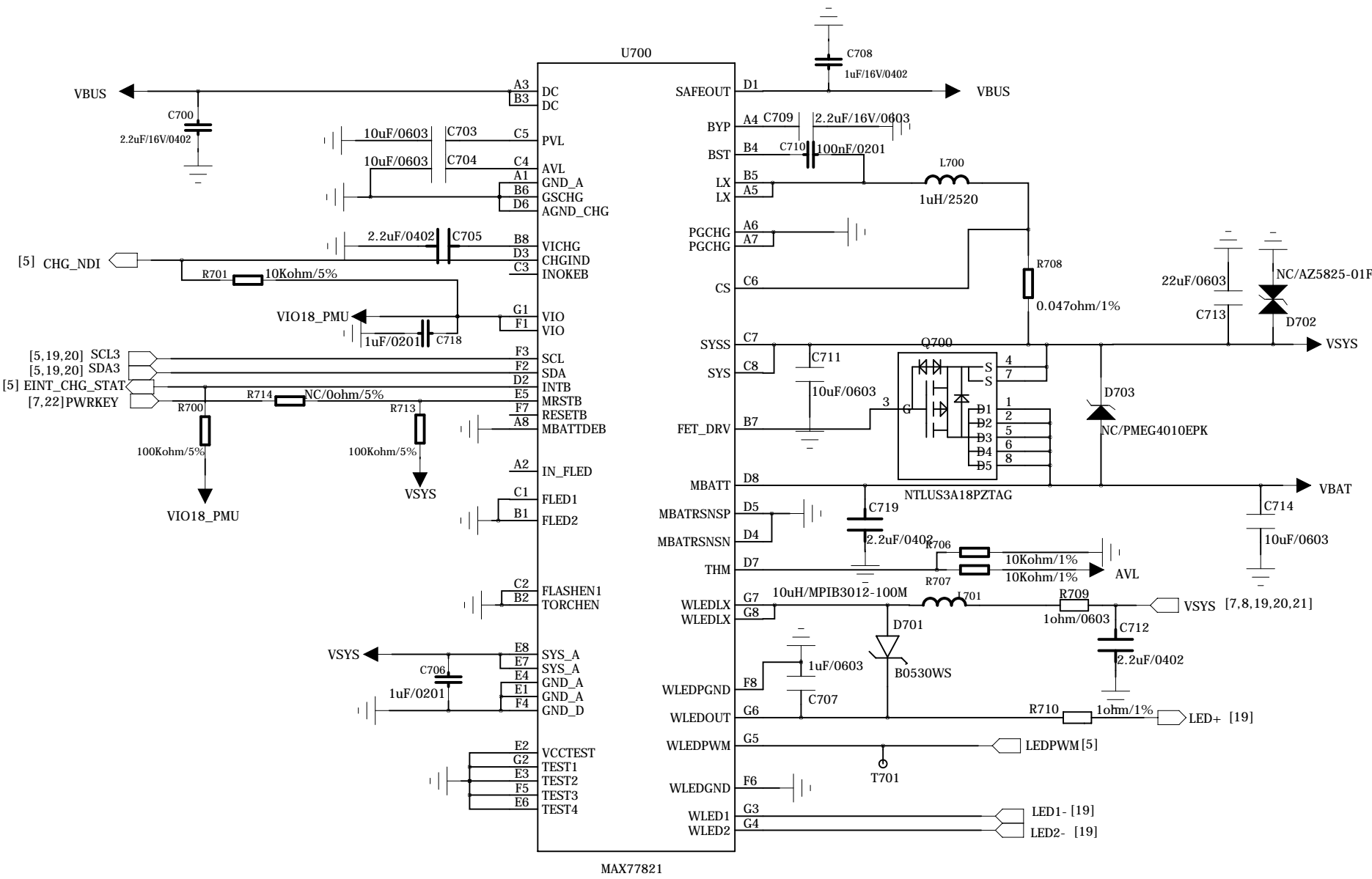




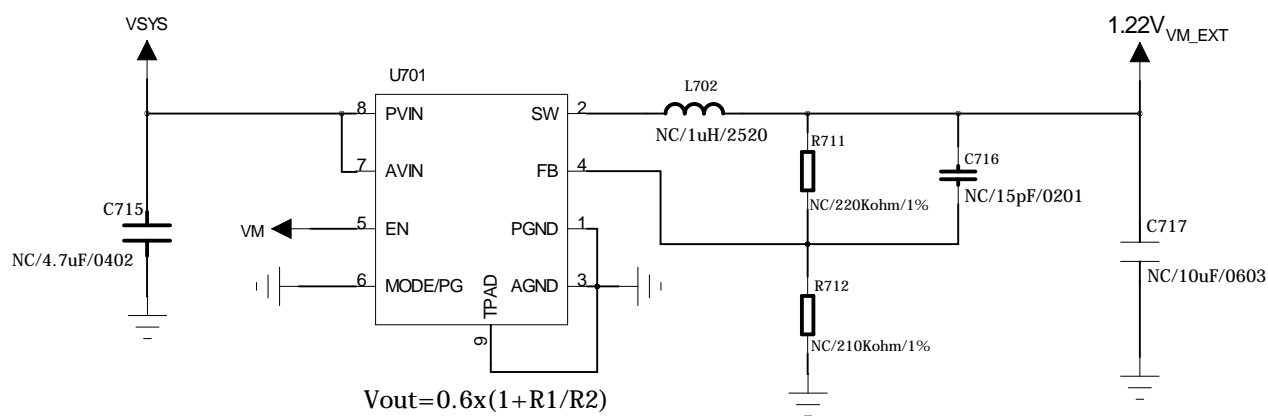


## Switching Charger + backlight

SW CHG + PP I2C address: 0X6B (Write:0xD6, Read:0xD7)



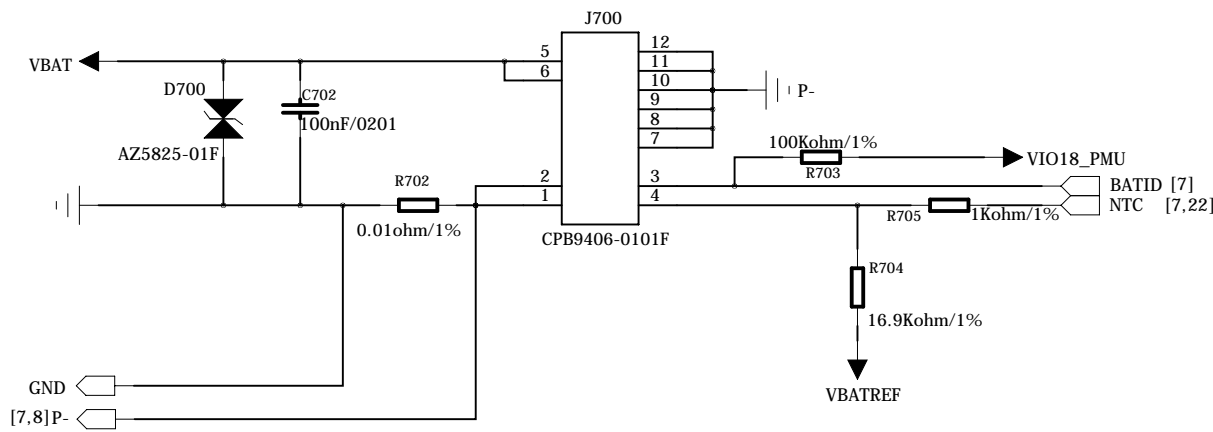
## External Buck for DRAM



[Optional] for Low Power enhancement

DRAM Buck Purpose: Reserved for low power performance

## BAT CONNECTOR



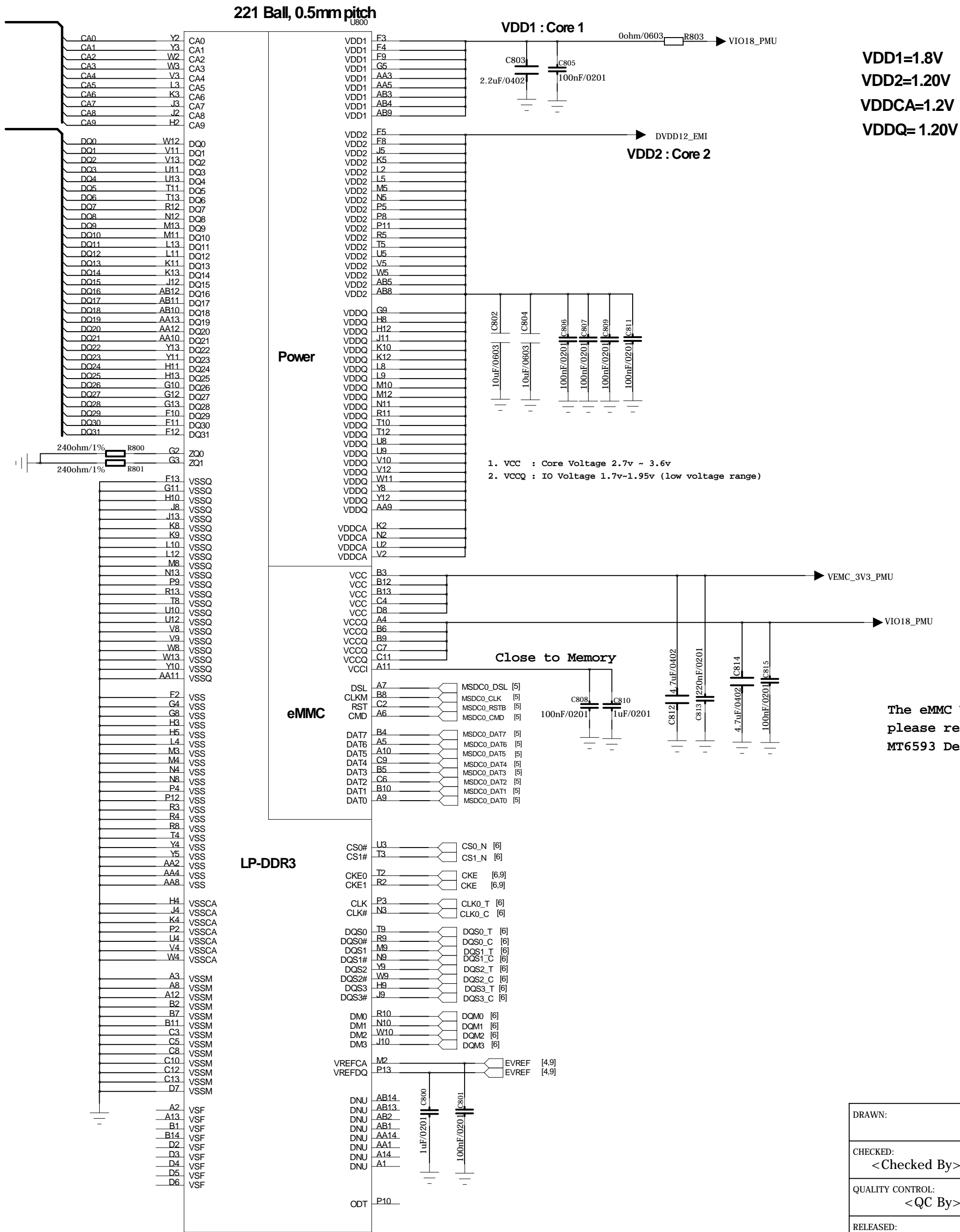
REVISION RECORD			
LTR	ECO NO:	APPROVED:	DATE:

DRAWN:	DATED:	M81			
CHECKED: <Checked By>	DATED: <Checked Date>	CODE:	SIZE:	DRAWING NO:	REV:
QUALITY CONTROL: <QC By>	DATED: <QC Date>	<Code>	A2	<Drawing Number>	V1.0
RELEASED: <Released By>	DATED: <Released Date>	SCALE: <Scale>			SHEET: 8 OF 25

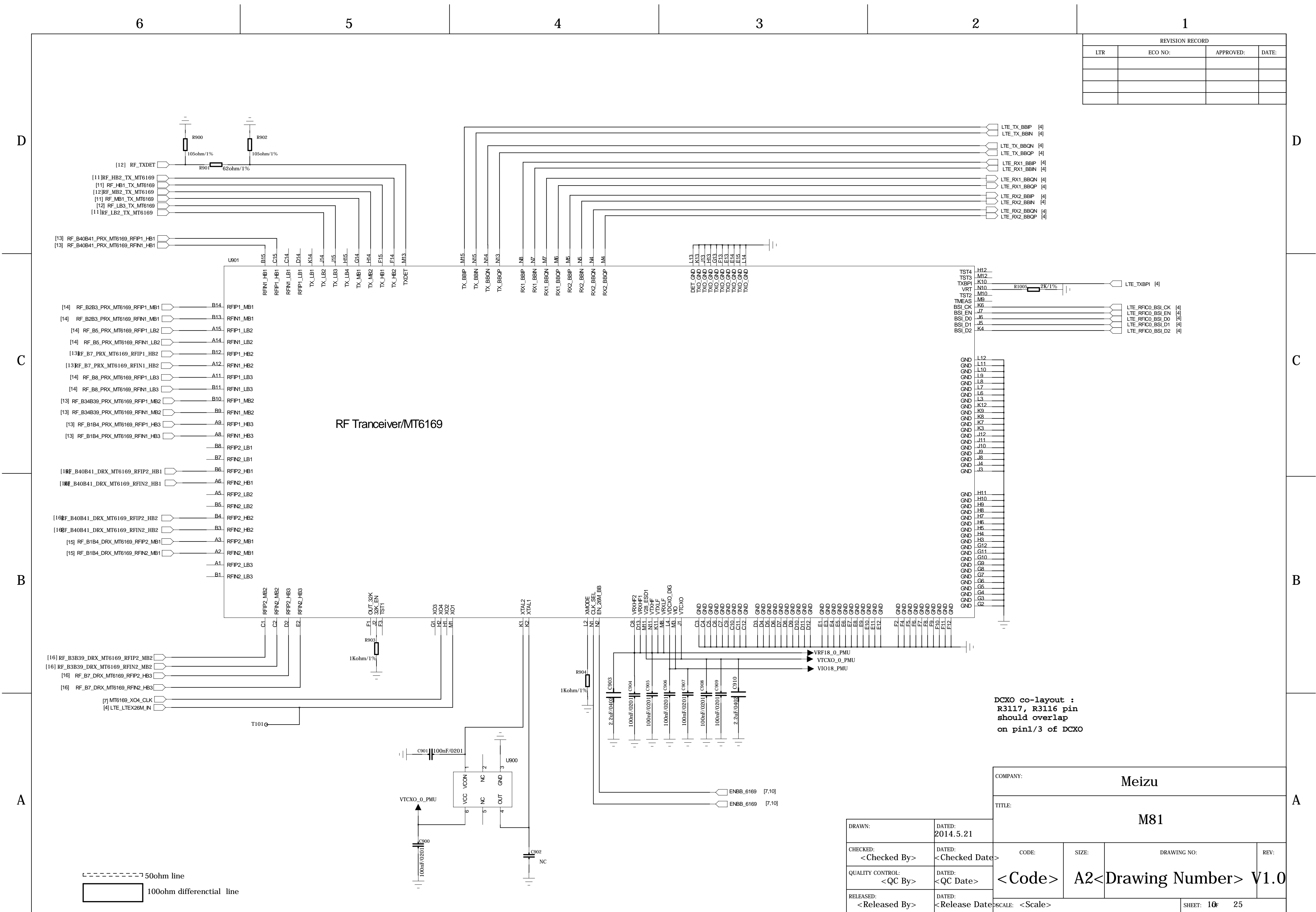


eMMC+LPDDR3 16GB eMMC + 16Gb LPDDR3

REVISION RECORD			
LTR	ECO NO:	APPROVED:	DATE:

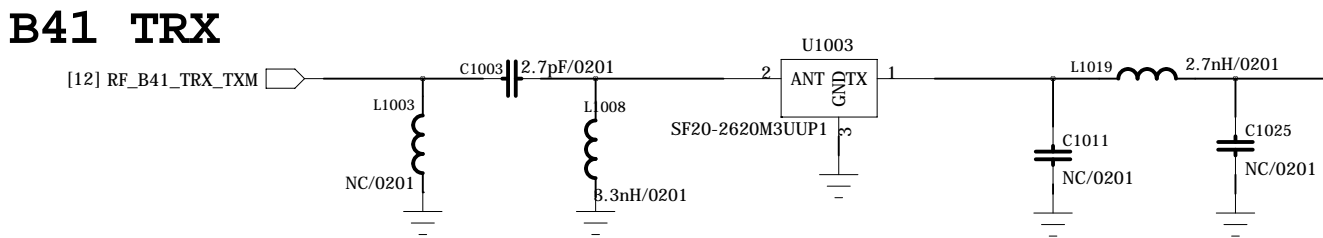
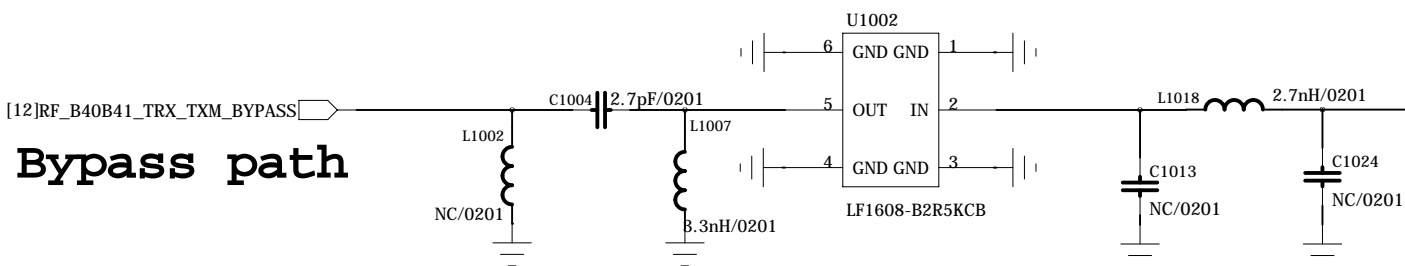
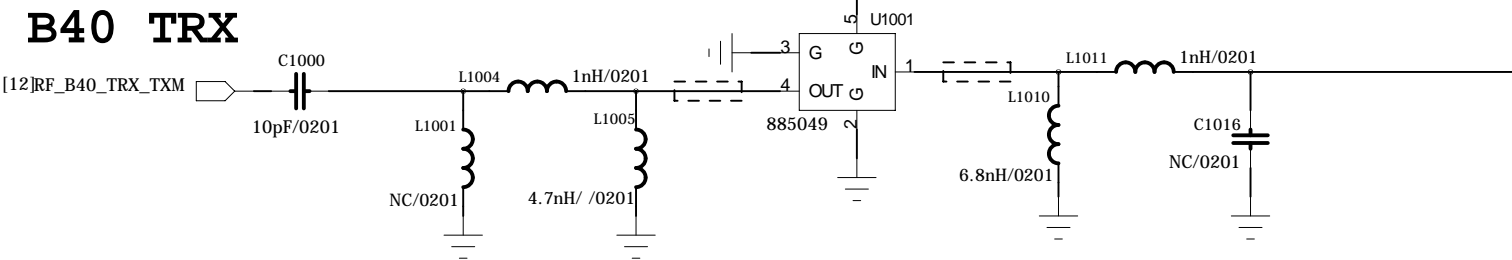
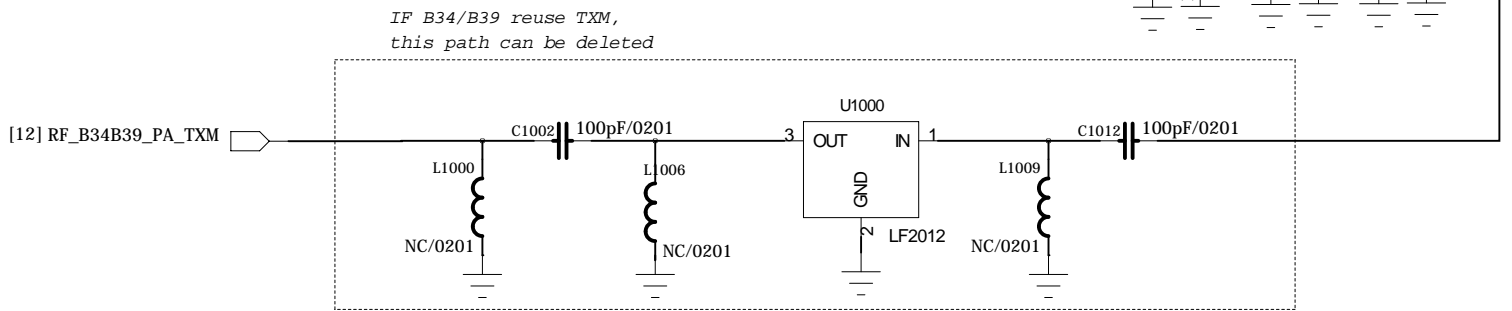
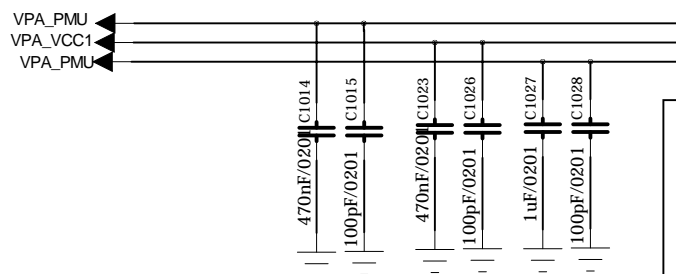
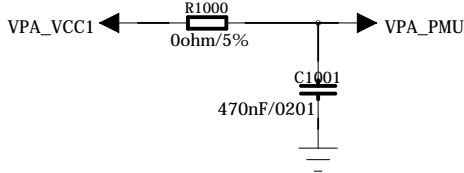
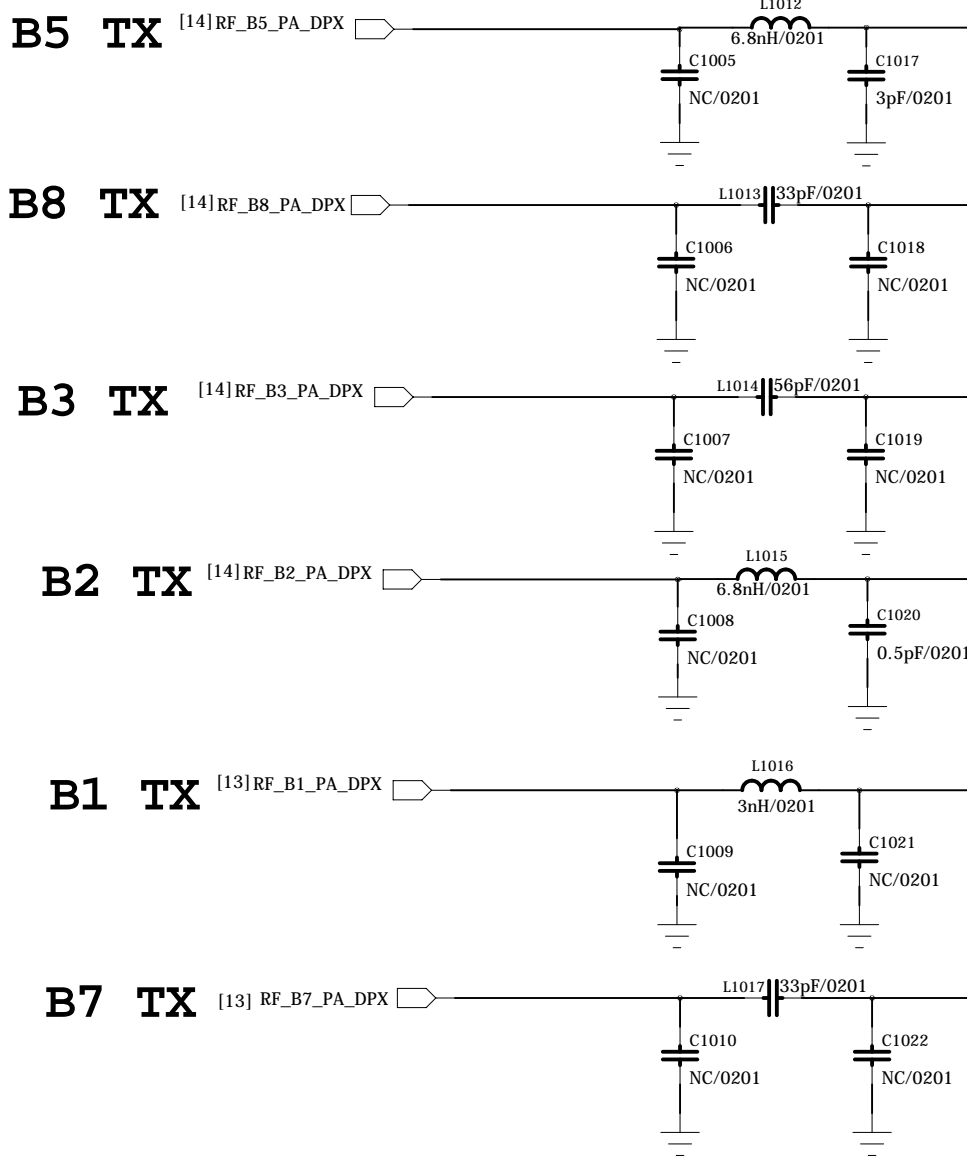


COMPANY: Meizu			
TITLE: M81			
CODE: <Code>		SIZE: A2	DRAWING NO: <Drawing Number>
			REV: V1.0
SCALE: <Scale>			SHEET: 90F 25



----- 50ohm line  
100ohm differential line

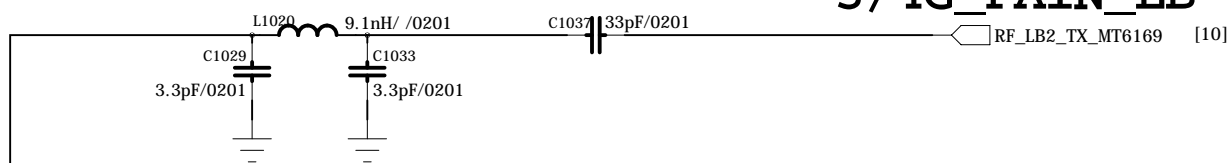
REVISION RECORD			
LTR	ECO NO:	APPROVED:	DATE:



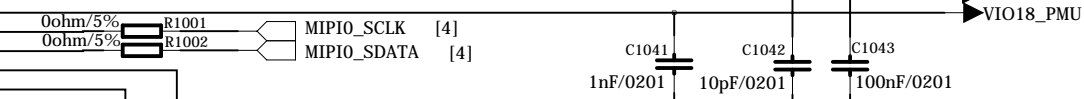
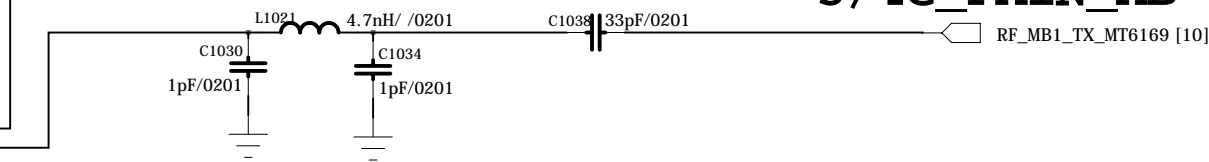
RFMD and Murata  
have pin to pin products.  
Please check latest  
QVL and matching  
accordingly

4G PA input need LPF for harmonic rejection

**3/4G PAIN\_LB**

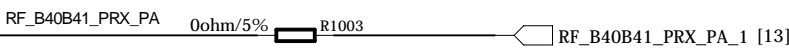
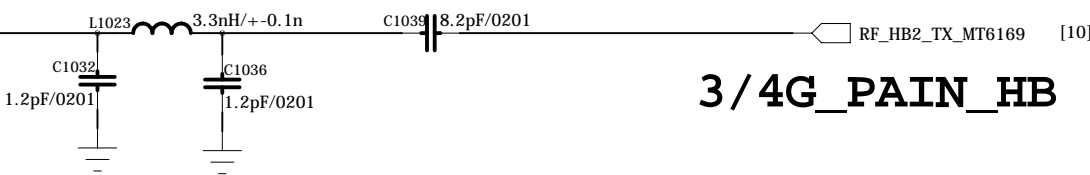


**3/4G PAIN\_MB**



LPF for more  
margin on Tx  
spurious

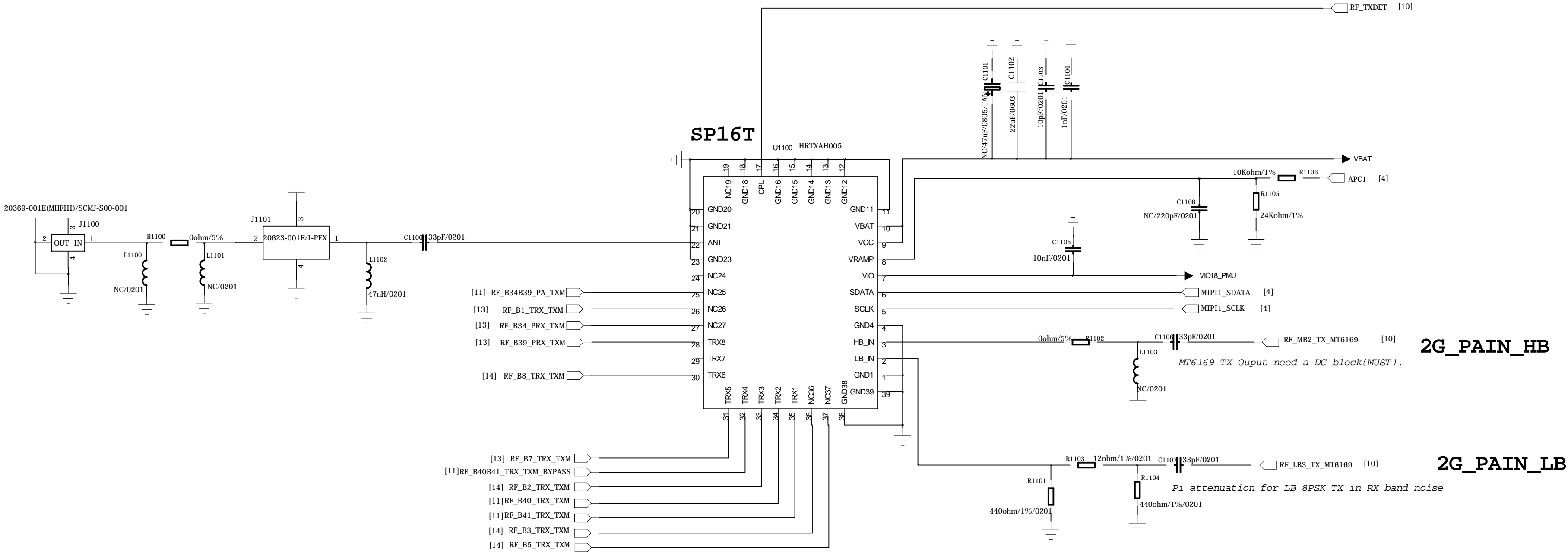
**3/4G PAIN\_HB**



COMPANY: Meizu			
TITLE: M81			
DRAWN:	DATED:	CODE:	SIZE:
CHECKED: <Checked By>	DATED: <Checked Date>	DRAWING NO:	
QUALITY CONTROL: <QC By>	DATED: <QC Date>	REV:	
RELEASED: <Released By>	DATED: <Release Date>	SCALE: <Scale>	
SHEET: 1 of 25			25

ASM\_Main\_824~2690MHz

REVISION RECORD			
LTR	ECO NO:	APPROVED:	DATE:



DRAWN:		DATED:		COMPANY: Meizu			
CHECKED:		DATED:		TITLE: M81			
QUALITY CONTROL:		DATED:		CODE:	SIZE:	DRAWING NO:	REV:
RELEASED:		DATED:		<Code>	A2	<Drawing Number>	V1.0
<Checked By>		<Checked Date>		SCALE: <Scale>			
<QC By>		<QC Date>		SHEET: 1 of 25			
<Released By>		<Release Date>					



6

5

4

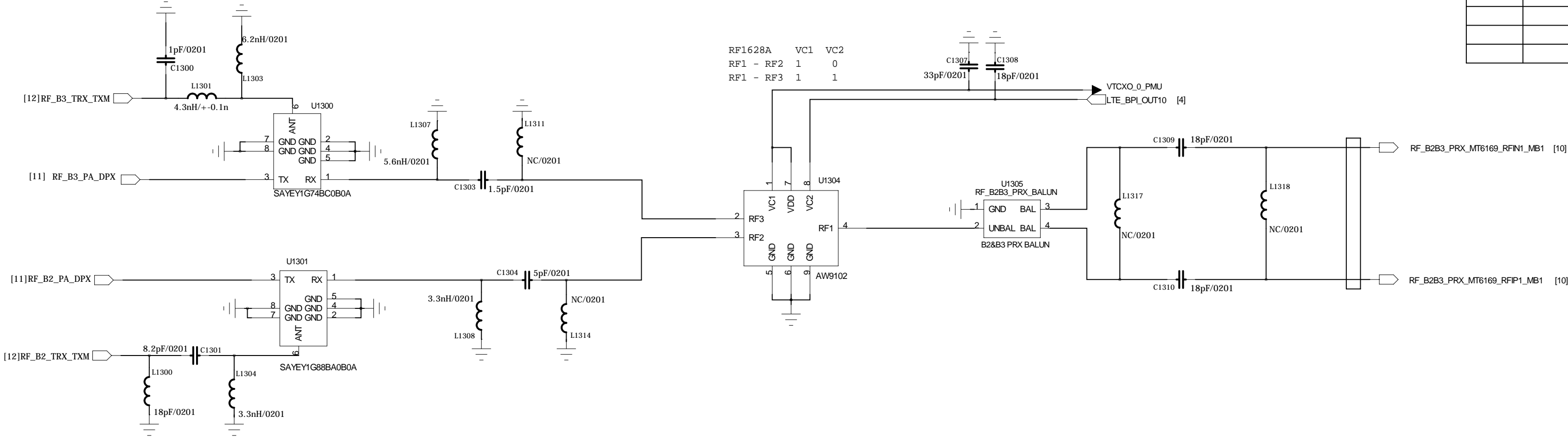
3

2

1

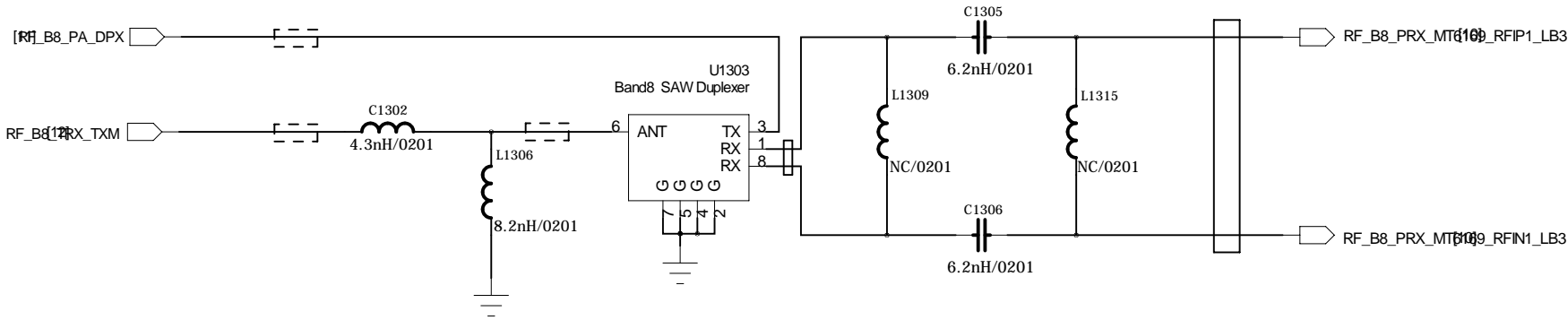
REVISION RECORD			
LTR	ECO NO:	APPROVED:	DATE:

B3 TRX

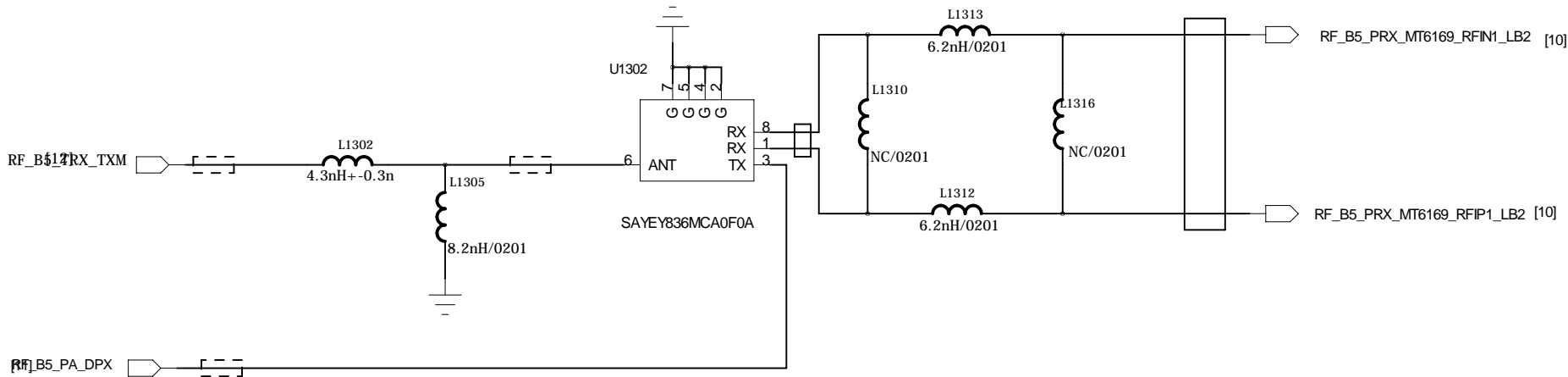


B2 TRX

B8 TRX



B5 TRX



COMPANY: Meizu			
TITLE: M81			
DRAWN: Eric	DATED: 2014.5.21	CODE: <Code>	SIZE: A2
CHECKED: <Checked By>	DATED: <Checked Date>	DRAWING NO: <Drawing Number>	REV: V1.0
QUALITY CONTROL: <QC By>	DATED: <QC Date>		
RELEASED: <Released By>	DATED: <Release Date>		
SCALE: <Scale>			SHEET: 14 25

6

5

4

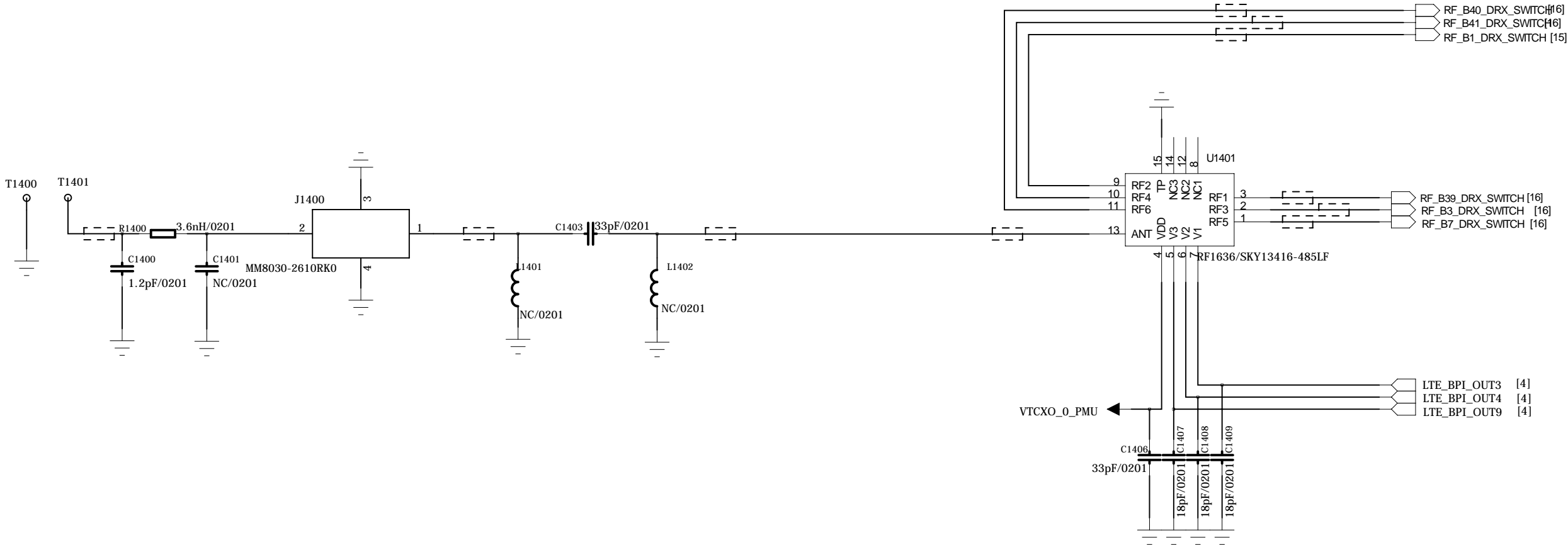
3

2

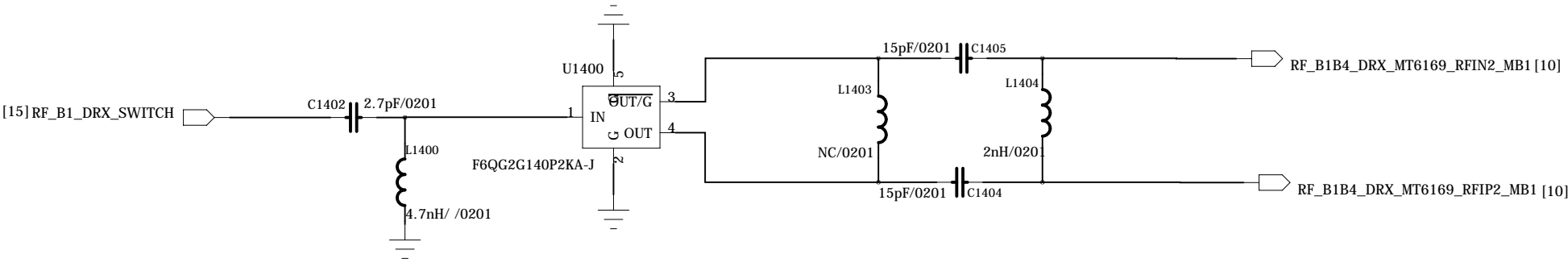
1

REVISION RECORD			
LTR	ECO NO:	APPROVED:	DATE:

DRX ANT: 1880-2690MHz



B1 DRX



COMPANY: Meizu			
TITLE: M81			
CODE:	SIZE:	DRAWING NO:	REV:
<Code>	A2	<Drawing Number>	V1.0
SCALE: <Scale>			SHEET: 15 25

DRAWN:	DATED:
CHECKED: <Checked By>	DATED: <Checked Date>
QUALITY CONTROL: <QC By>	DATED: <QC Date>
RELEASED: <Released By>	DATED: <Release Date>

6

5

4

3

2

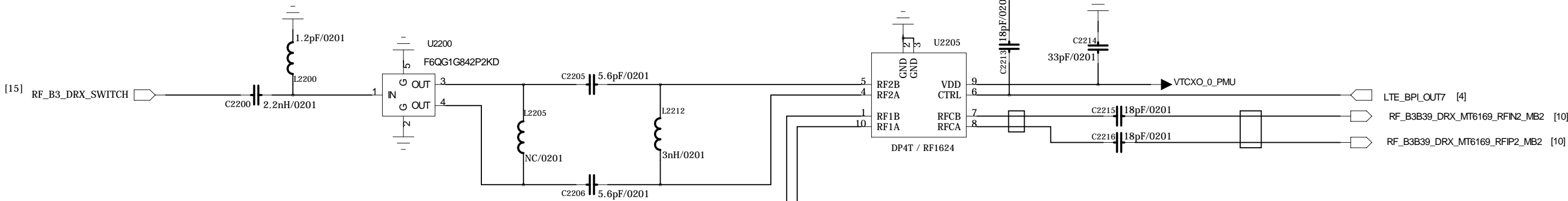
1

REVISION RECORD			
LTR	ECO NO:	APPROVED:	DATE:

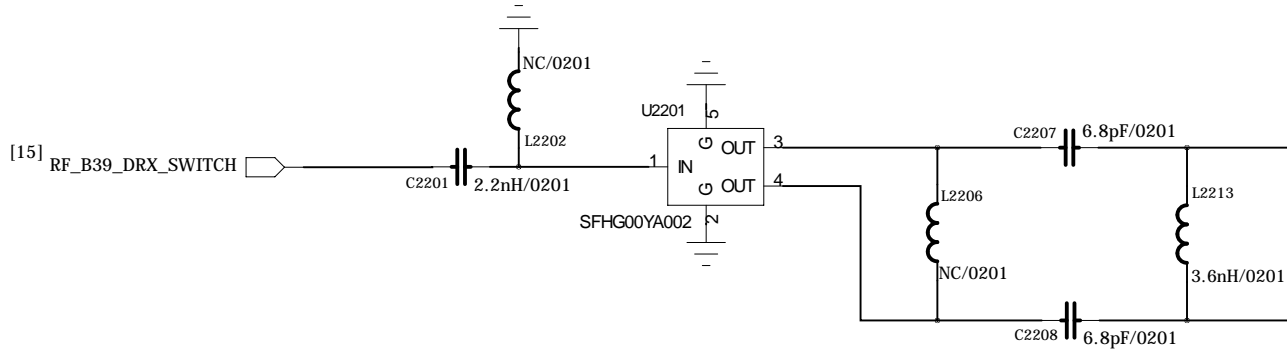
RF1624	CTRL
RF1AB	1
RF2AB	0

DP4T

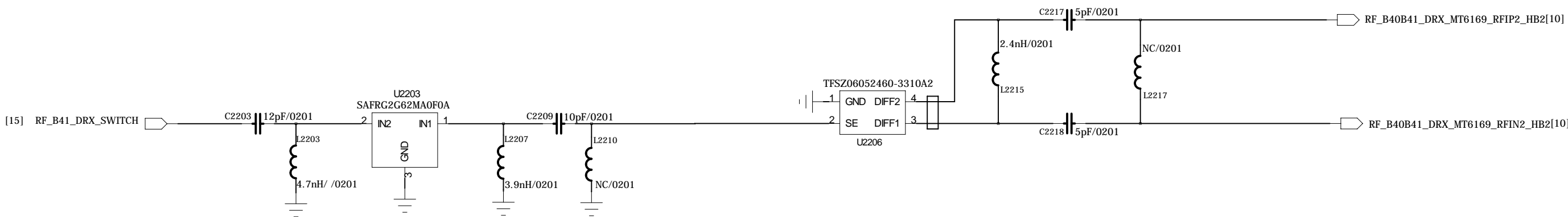
B3 DRX



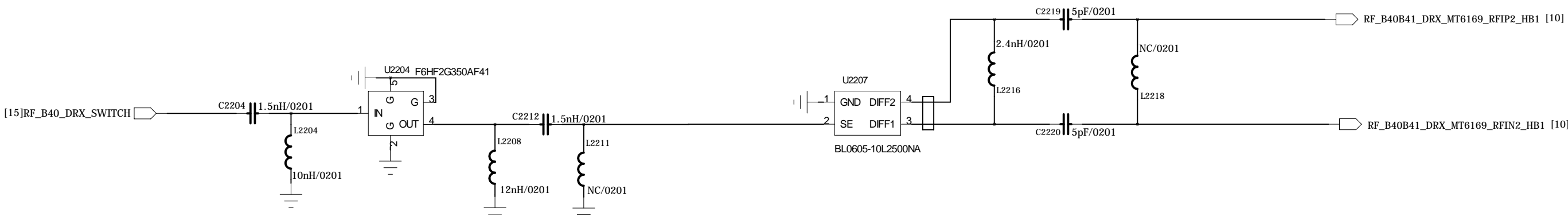
B39 DRX



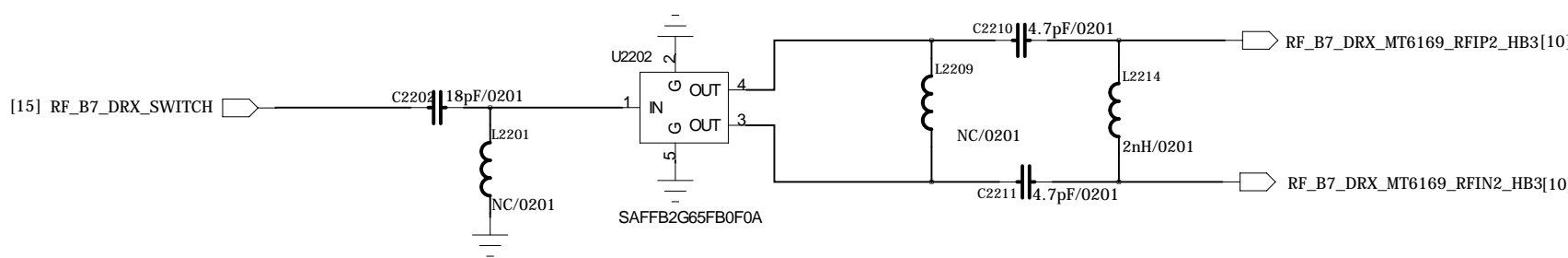
B41 DRX



B40 DRX



B7 DRX



COMPANY: Meizu				
TITLE: M81				
>	CODE:	SIZE:	DRAWING NO:	REV:
<Code>	A2	<Drawing Number>		V1.0
SCALE: <Scale>			SHEET: 16	25



6

5

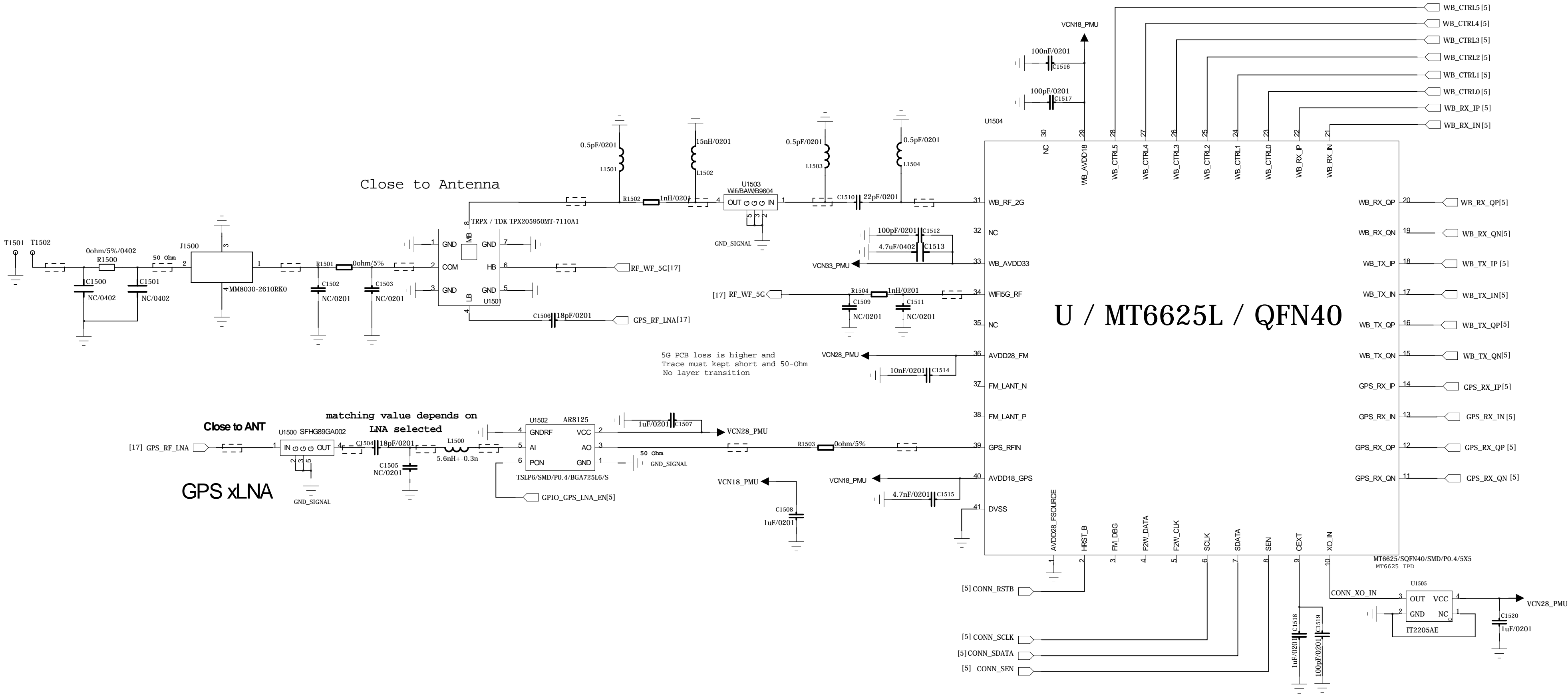
4

3

2

1

REVISION RECORD			
LTR	ECO NO:	APPROVED:	DATE:

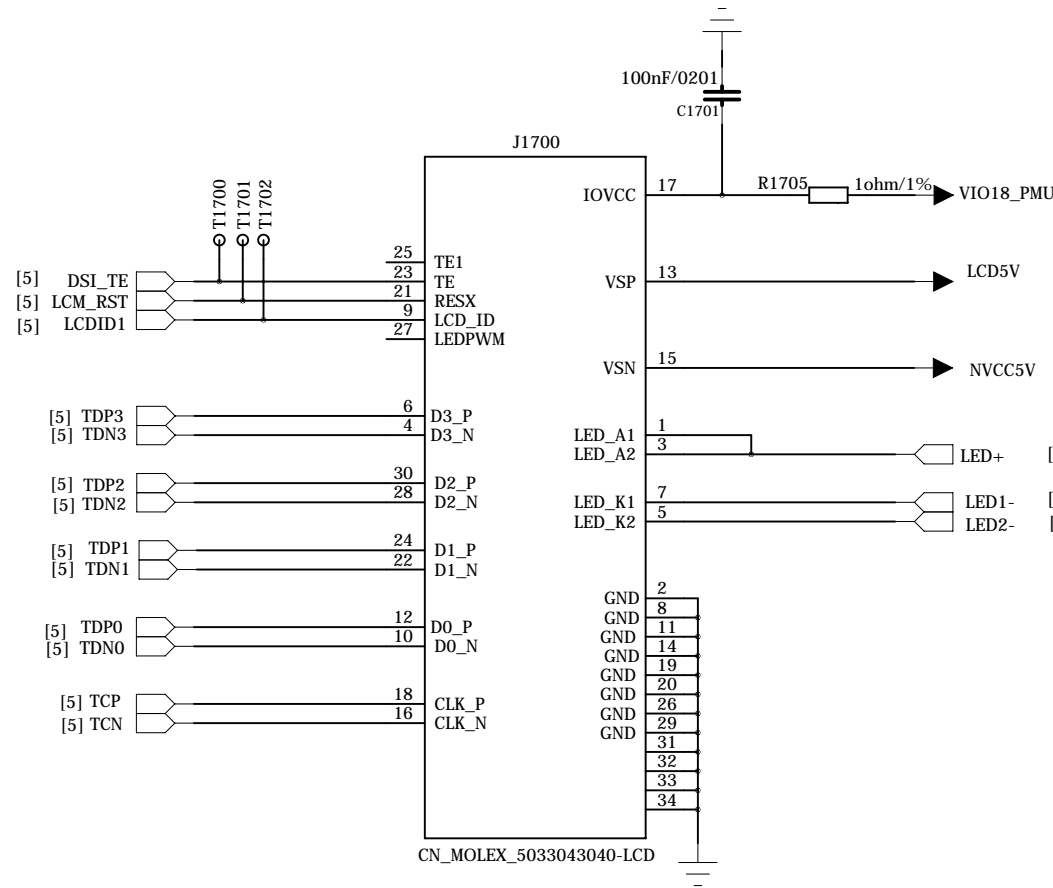


COMPANY: Meizu			
TITLE: M81			
CODE:	SIZE:	DRAWING NO:	REV:
<Code>	A2	<Drawing Number>	V1.0
SCALE: <Scale>			SHEET: 17 25

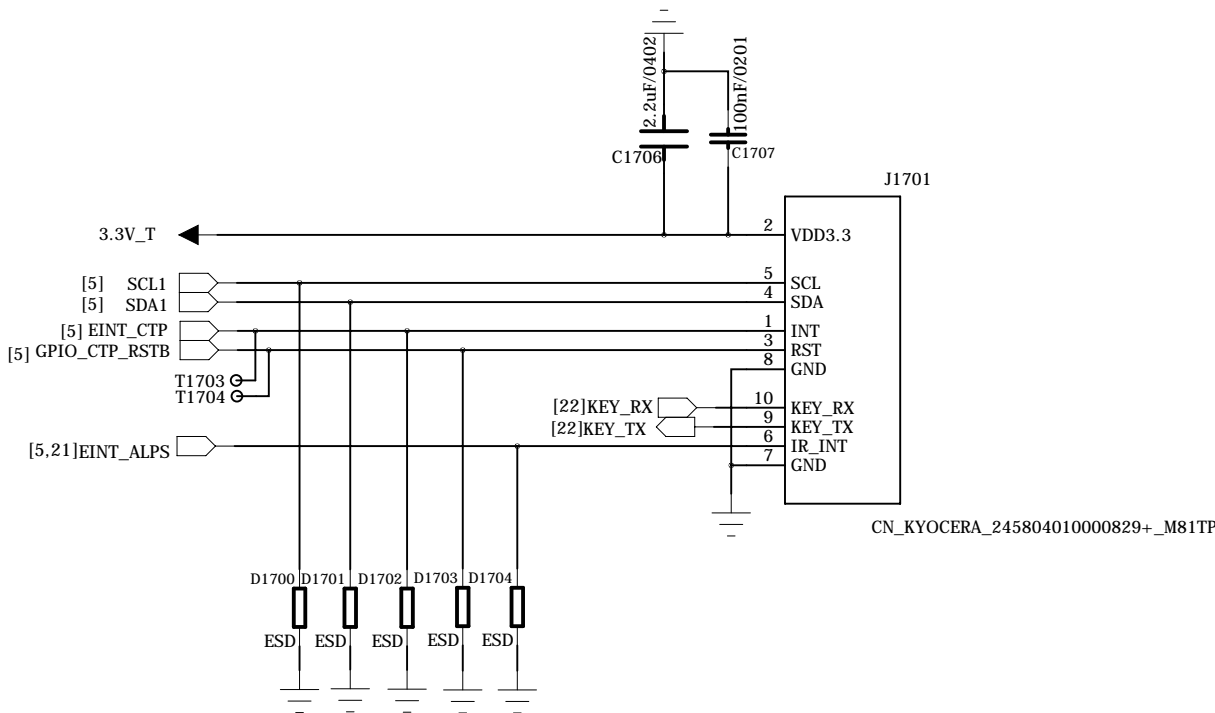
DRAWN:	DATED:
CHECKED: <Checked By>	DATED: <Checked Date>
QUALITY CONTROL: <QC By>	DATED: <QC Date>
RELEASED: <Released By>	DATED: <Release Date>



LCD

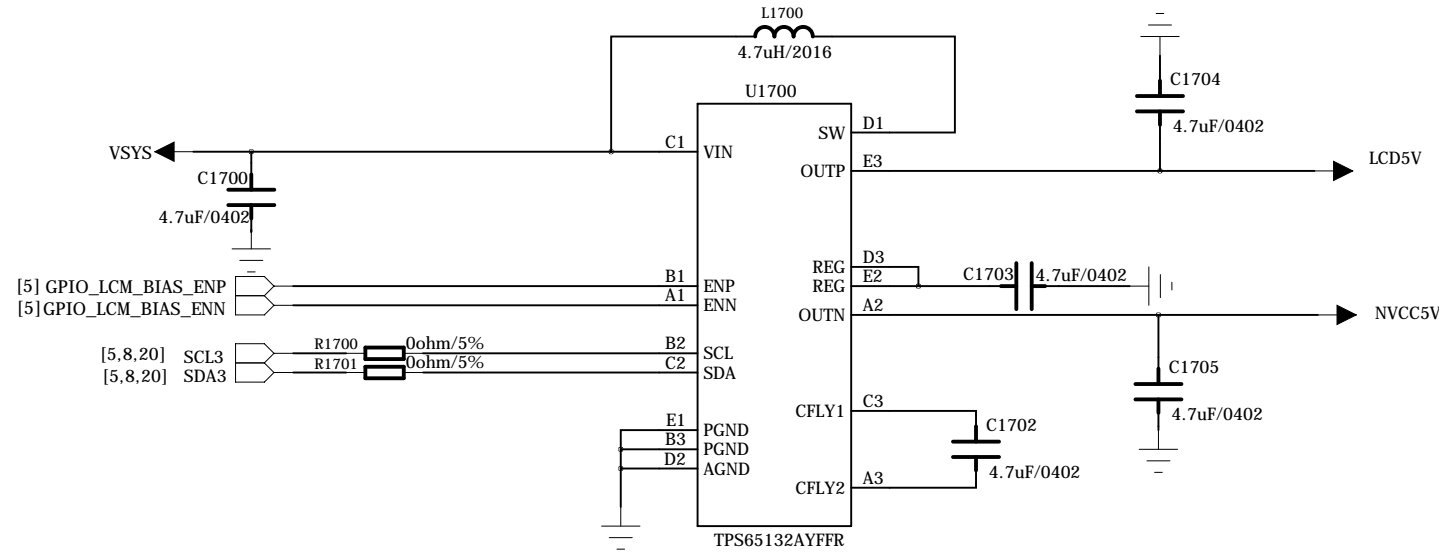


TP



LCM Gate Drive

LCM Gate Driver I2C address: 0X3E (Write:0x7C, Read:0x7D)



COMPANY: Meizu			
TITLE: M81			
CODE:	SIZE:	DRAWING NO:	REV:
<Code>	A2	<Drawing Number>	V1.0
SCALE: <Scale>		SHEET: 10 25	

DRAWN:	DATED:
CHECKED: <Checked By>	DATED: <Checked Date>
QUALITY CONTROL: <QC By>	DATED: <QC Date>
RELEASED: <Released By>	DATED: <Release Date>

6

5

4

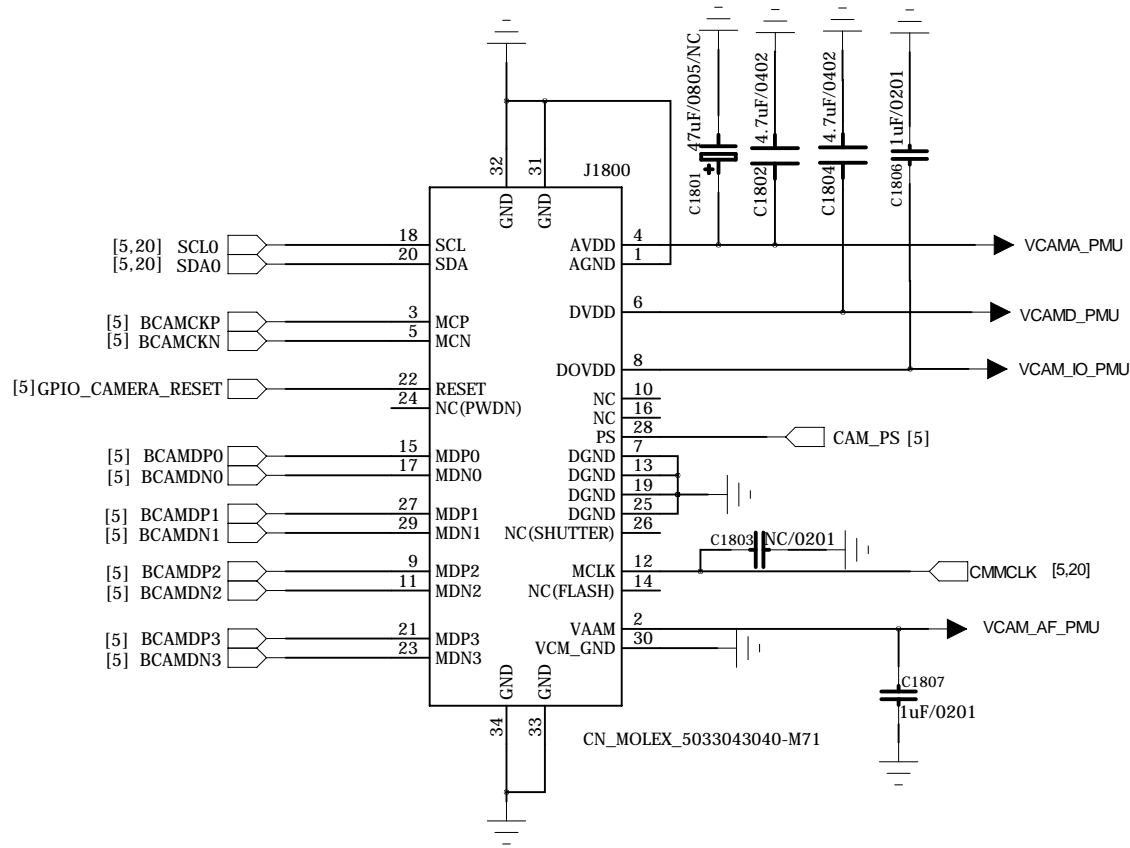
3

2

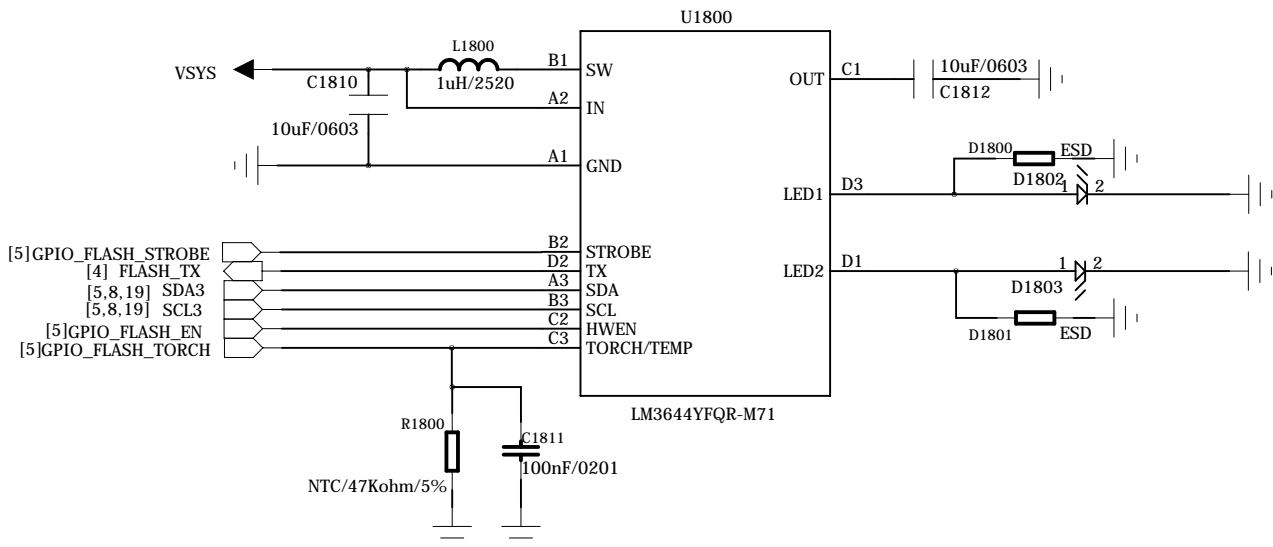
1

Rear Camera

Rear camera (S5K3L2) I2C address: 0X10 (Write:0x20, Read:0x21)  
AF driver I2C address: (Write:0x18, Read:0x19)

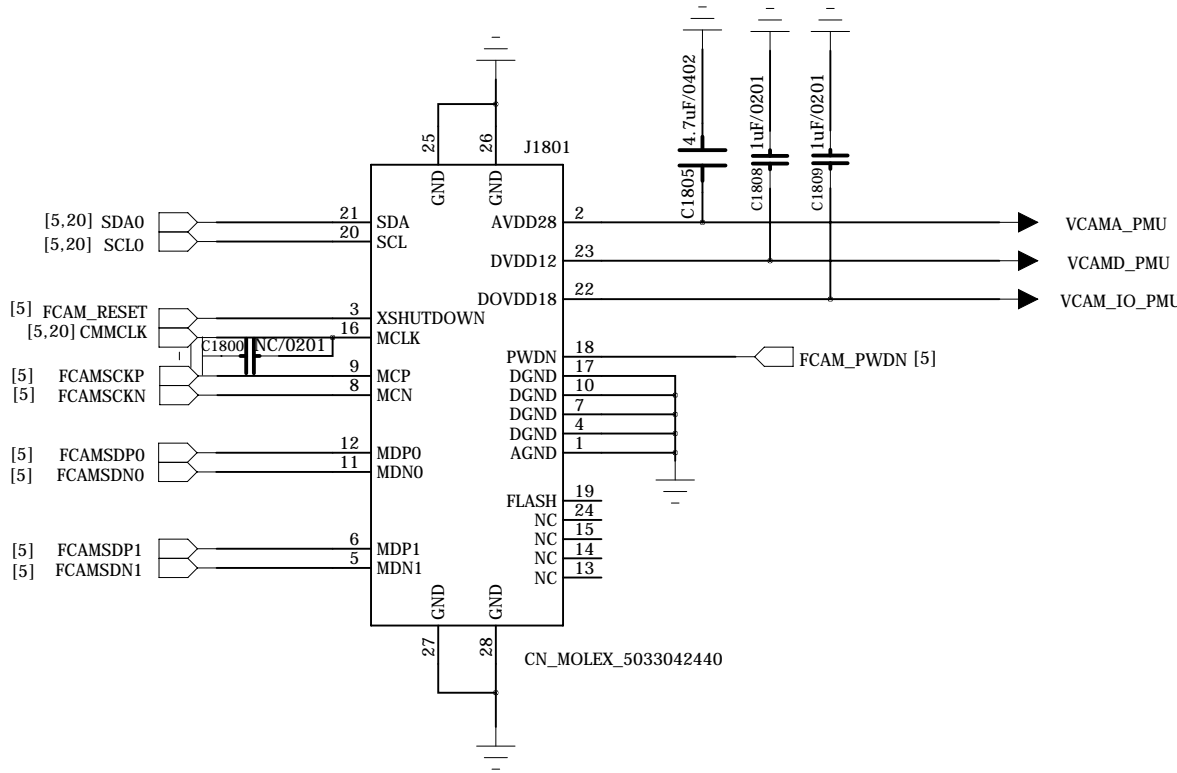


Flash LED



Front Camera

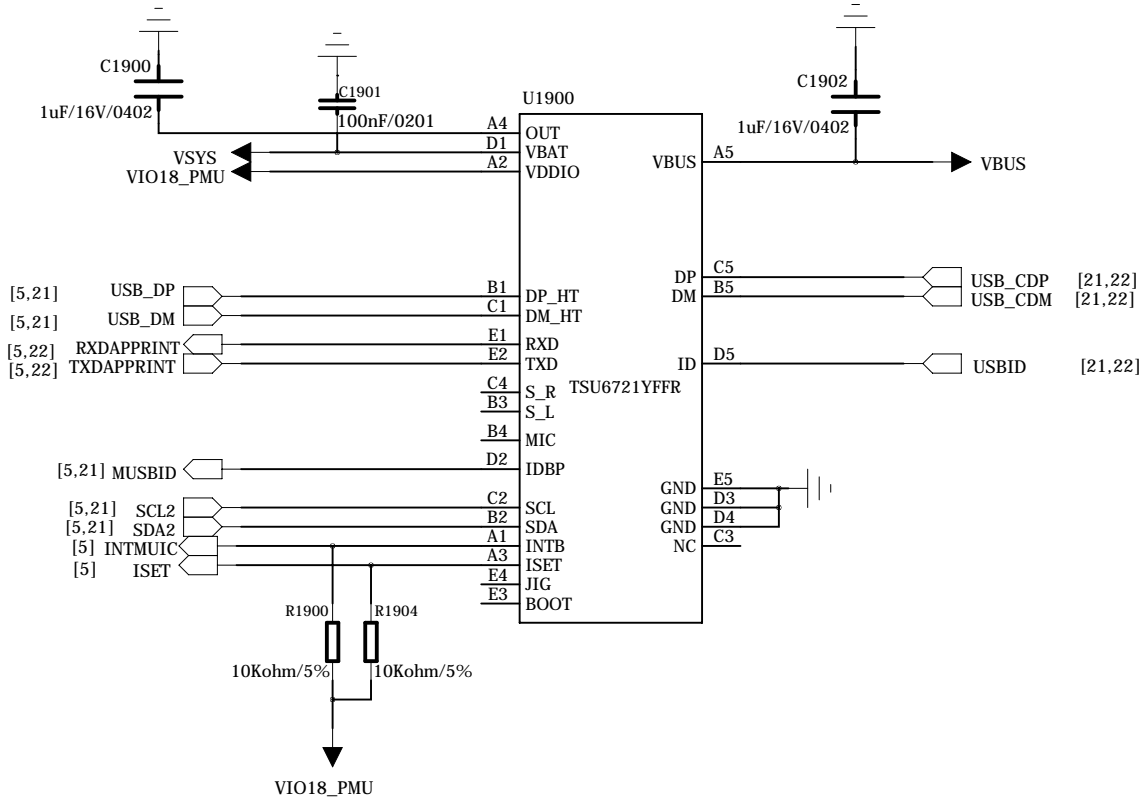
Front camera (OV5670) I2C address: 0X36 (Write:0x6C, Read:0x6D)



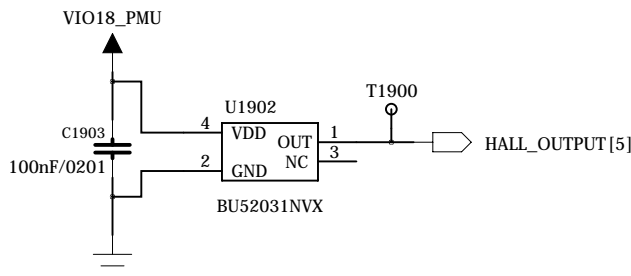
REVISION RECORD			
LTR	ECO NO:	APPROVED:	DATE:

COMPANY: Meizu			
TITLE: M81			
CHECKED: <Checked By>	DATED: <Checked Date>	CODE: <Code>	SIZE: A2
QUALITY CONTROL: <QC By>	DATED: <QC Date>	DRAWING NO: <Drawing Number>	
RELEASED: <Released By>	DATED: <Release Date>	REV: V1.0	
SCALE: <Scale>			SHEET: 20 of 25

MUIC

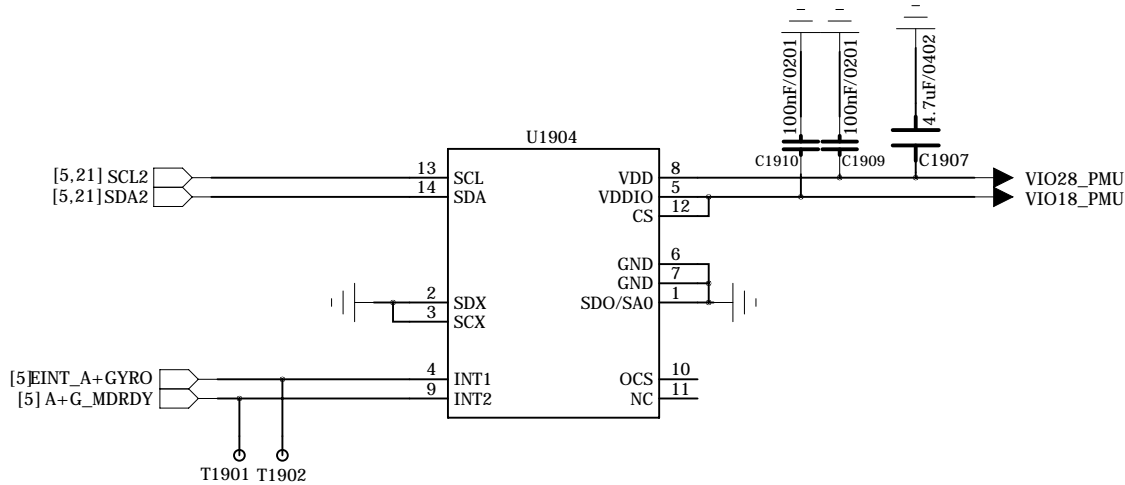


HALL IC

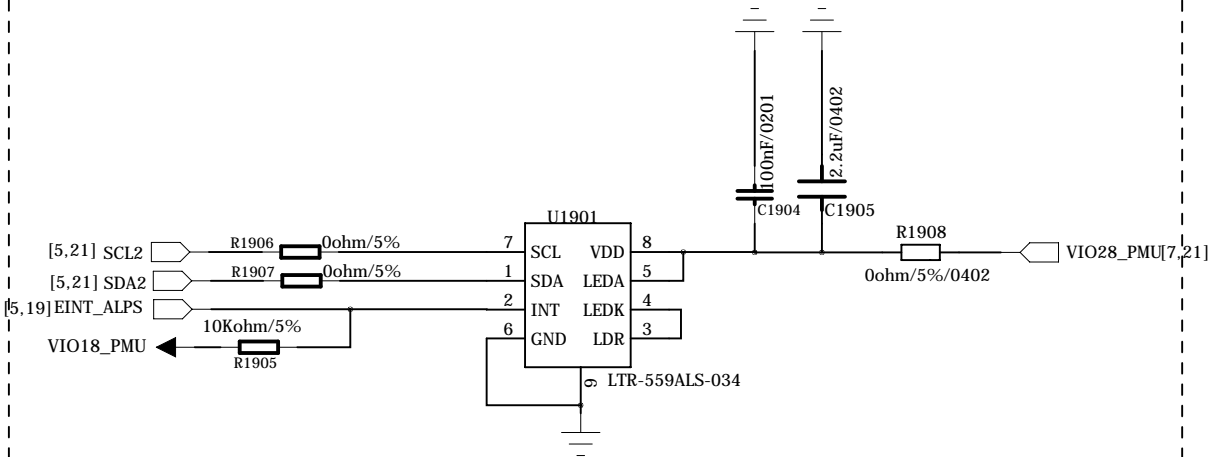


Accerometer + Gyro Sensor

A+Gyro I2C Address: 0x68 (Write:0xD4, Read:0xD5)

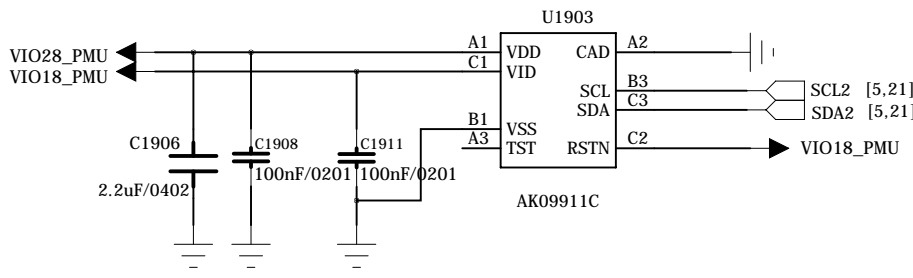


ALS+PS



M-Sensor

M-Sensor I2C Address: 0x0C (Write:0x18, Read:0x19)



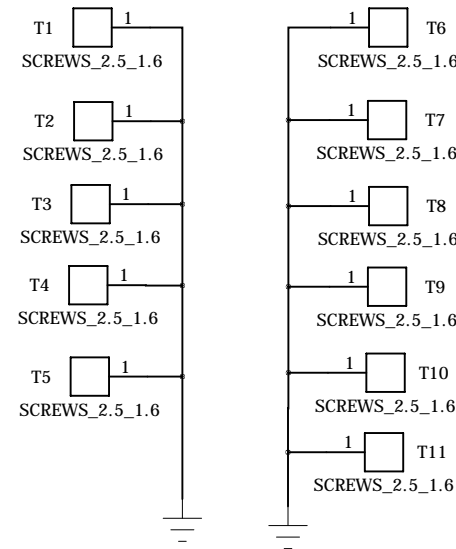
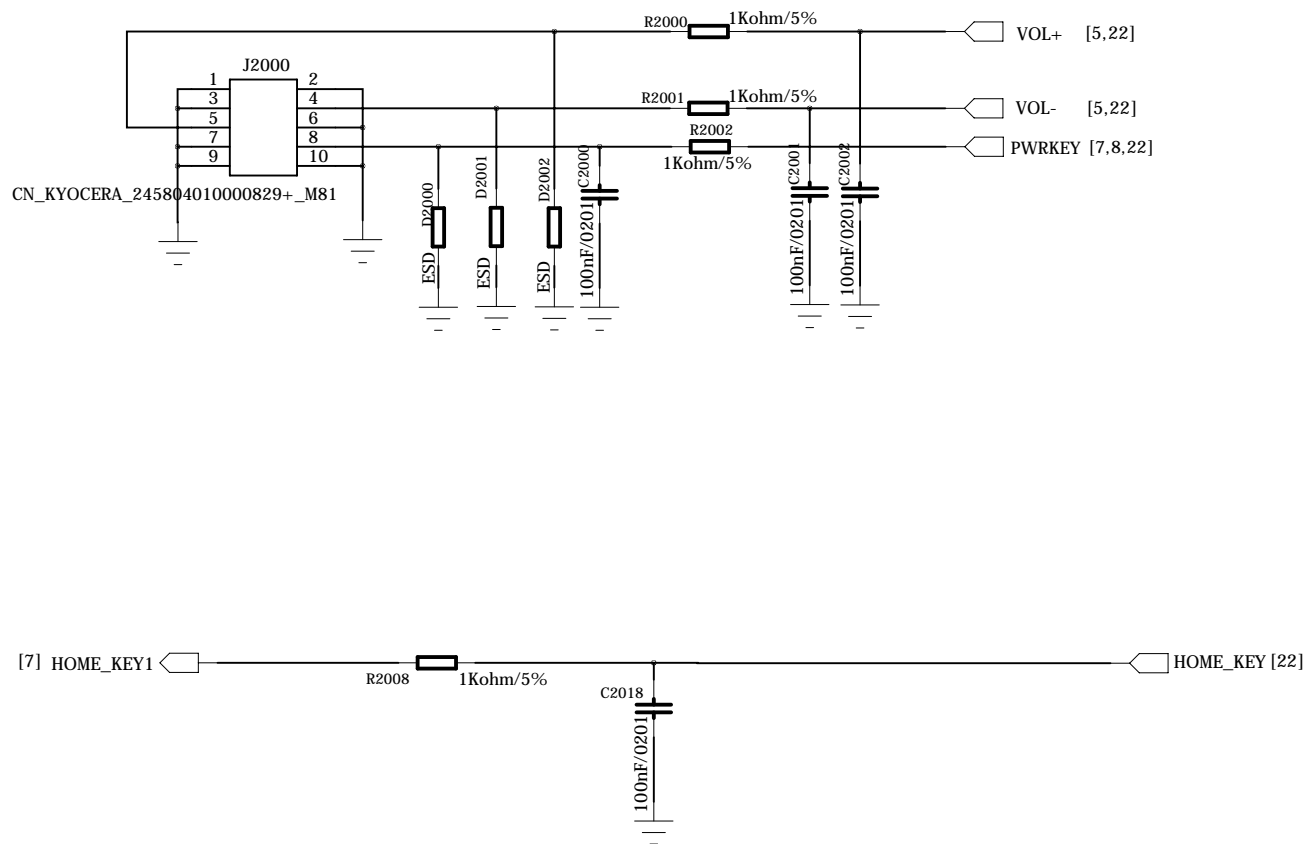
REVISION RECORD			
LTR	ECO NO:	APPROVED:	DATE:

COMPANY: Meizu

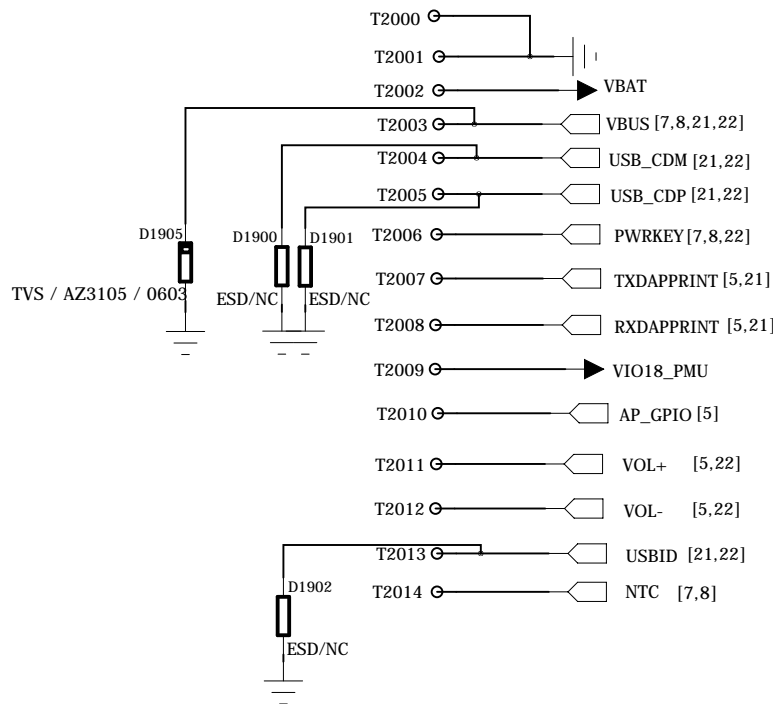
TITLE: M81

DRAWN:	DATED:	M01			
CHECKED: <Checked By>	DATED: <Checked Date>	CODE:	SIZE:	DRAWING NO:	REV:
QUALITY CONTROL: <QC By>	DATED: <QC Date>	<Code>	A2	<Drawing Number>	V1.0
RELEASED: <Released By>	DATED: <Release Date>	SCALE: <Scale>			SHEET: 24 of 25

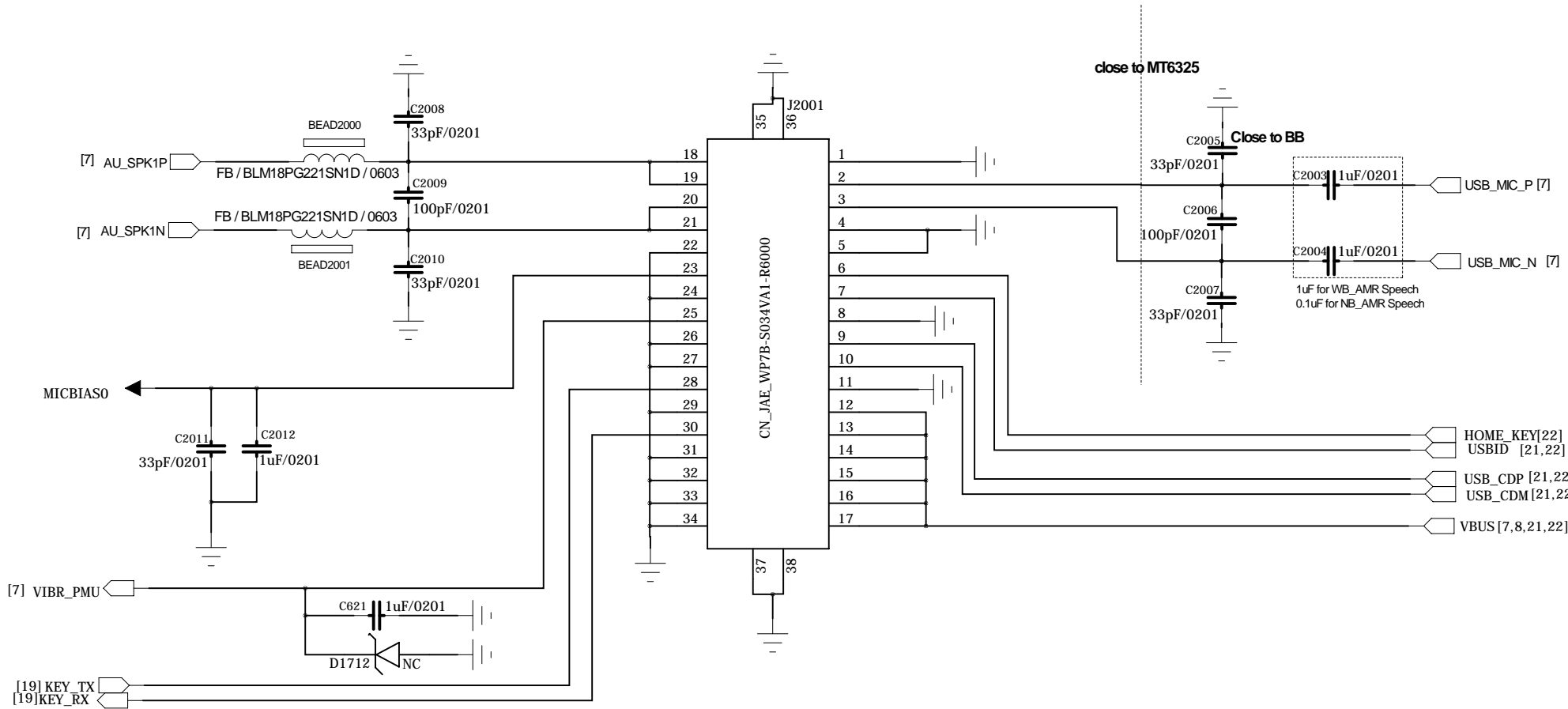
Key



Test point



USB Connector



REVISION RECORD			
LTR	ECO NO:	APPROVED:	DATE:

COMPANY: Meizu			
TITLE: M81			
CODE:	SIZE:	DRAWING NO:	REV:
<Code>	A2	<Drawing Number>	V1.0
SCALE: <Scale>			SHEET: 20/25

DRAWN:	DATED:
CHECKED: <Checked By>	DATED: <Checked Date>
QUALITY CONTROL: <QC By>	DATED: <QC Date>
RELEASED: <Released By>	DATED: <Release Date>

6

5

4

3

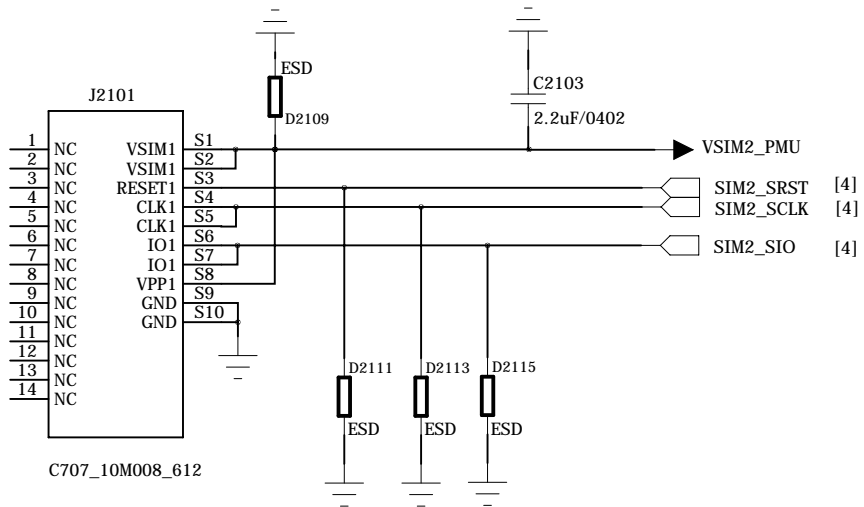
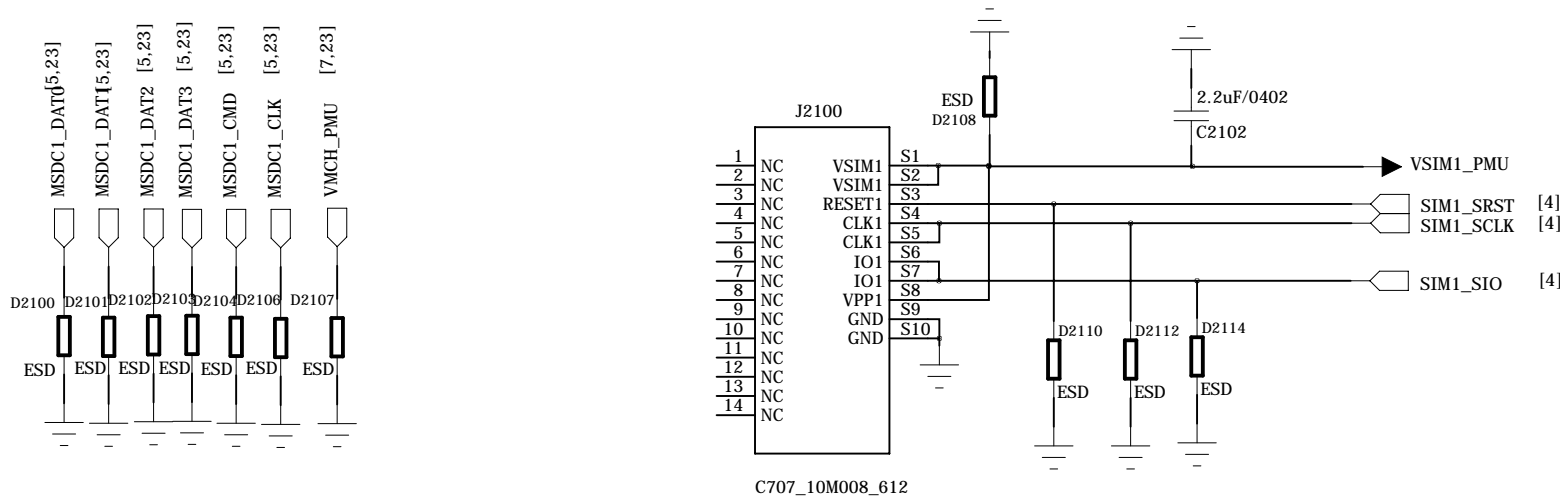
2

1

REVISION RECORD			
LTR	ECO NO:	APPROVED:	DATE:

D

D

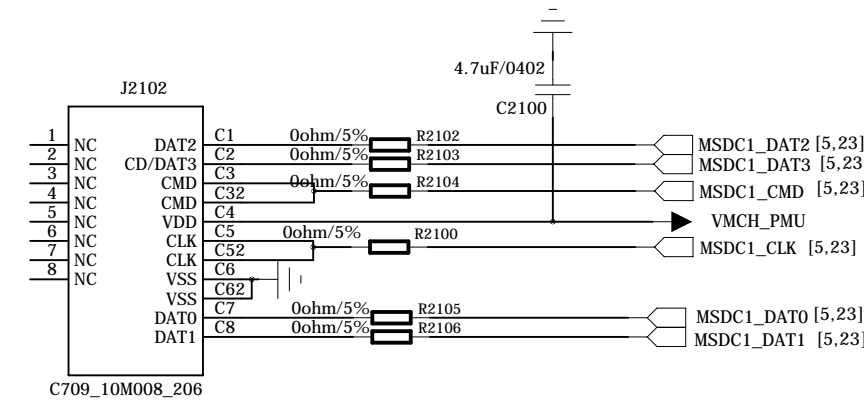
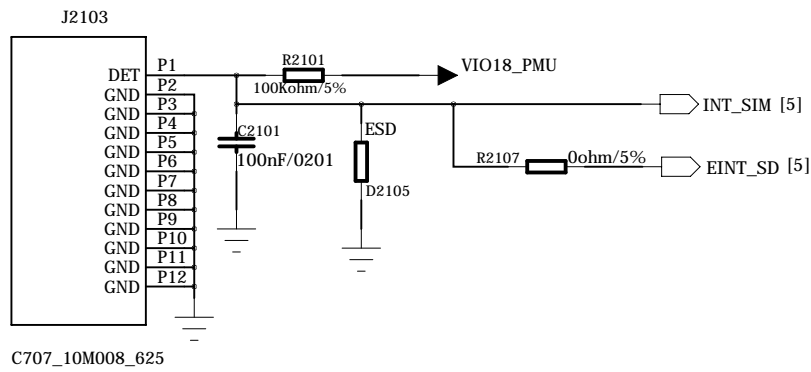


C

C

B

B



A

A

DRAWN:		DATED:		COMPANY: Meizu			
CHECKED:		DATED:		TITLE: M81			
QUALITY CONTROL:		DATED:		CODE:	SIZE:	DRAWING NO:	REV:
RELEASED:		DATED:		<Code>	A2	<Drawing Number>	V1.0
SCALE: <Scale>		SHEET: 28		25			

6

5

4

3

2

**1**

add R713;change J2201 pin;change U1904;0316

REVISION RECORD			
LTR	ECO NO:	APPROVED:	DATE:

D

D

C

C

B

B

A

A

DRAWN: Eric DATED: 2014.5.21 CHECKED: <Checked By> DATED: <Checked Date> QUALITY CONTROL: <QC By> DATED: <QC Date> RELEASED: <Released By> DATED: <Release Date>		COMPANY: Meizu			
		TITLE: M81			
		CODE: <Code>	SIZE: A2	DRAWING NO: <Drawing Number>	REV: V1.0
		SCALE: <Scale>		SHEET: 24 of 25	



6

5

4

3

2

**1**

U2300 Msensor AK09911C I2C connect to MPU6515A,add R2300 -2301;0718

REVISION RECORD			
LTR	ECO NO:	APPROVED:	DATE:

D

D

C

C

B

B

A

A

		COMPANY: <div>Meizu</div>			
		TITLE: <div>M81</div>			
DRAWN: <div>Eric</div>	DATED: <div>2014.5.21</div>	CODE: <div>&lt;Code&gt;</div>	SIZE: <div>A2</div>	DRAWING NO: <div>&lt;Drawing Number&gt;</div>	REV: <div>V1.0</div>
CHECKED: <div>&lt;Checked By&gt;</div>	DATED: <div>&lt;Checked Date&gt;</div>				
QUALITY CONTROL: <div>&lt;QC By&gt;</div>	DATED: <div>&lt;QC Date&gt;</div>				
RELEASED: <div>&lt;Released By&gt;</div>	DATED: <div>&lt;Release Date&gt;</div>				
		SCALE: <Scale>			SHEET: 25 of 25