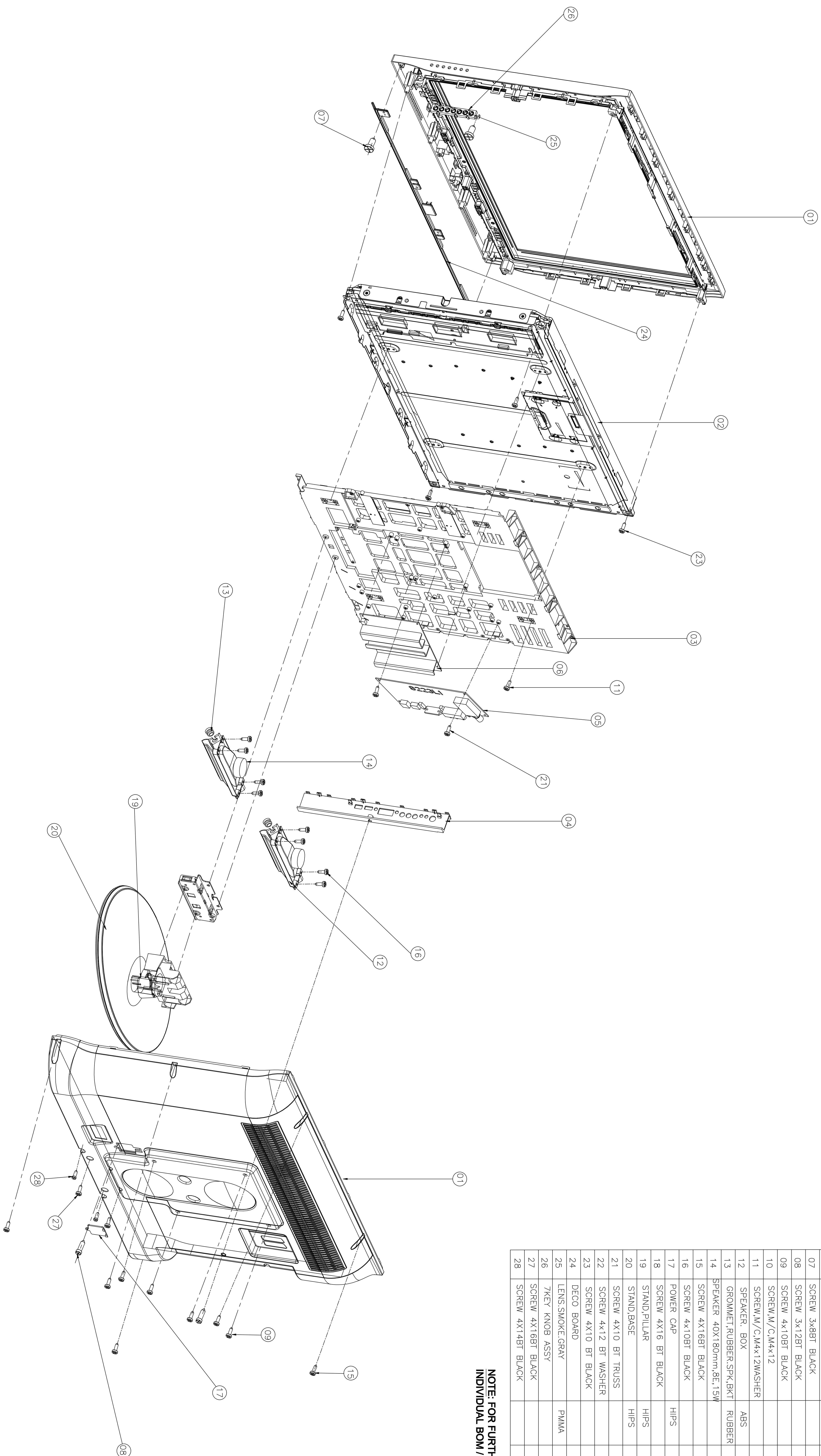


32" S8 SERIES - SAM32

Sr.no.	DESCRIPTION	MATERIAL	QTY/SET	PART CODE
01	FRONT COVER	ABS+PMW	01	1200043536
02	PANEL LID	- - -	01	1100077292
03	FRAME CHASSIS	HIPS	01	1200048001
04	PLATE CONTROL	HIPS	01	1200051362
05	MAIN PCB	- - -	01	1200047557
06	POWER SUPPLY	- - -	01	1200043557
07	SCREW 3x8BT BLACK		04	1100055471
08	SCREW 3x12BT BLACK		02	1100004231
09	SCREW 4x10BT BLACK		04	1100004224
10	SCREW M/C,M4x12		04	1100010469
11	SCREW M/C,M4x12WASHER		06	1100053034
12	SPEAKER. BOX	ABS	02	1200030582
13	GROMMET RUBBER,SPK,BKT	RUBBER	04	1100045427
14	SPEAKER 40X180mm,8E,15W		02	1100045199
15	SCREW 4x16BT BLACK		04	1100004229
16	SCREW 4x10BT BLACK		08	1100004224
17	POWER CAP	HIPS	01	1200035671
18	SCREW 4x16 BT BLACK	HIPS	04	1200065082
19	STAND,PILLAR	HIPS	01	1200030421
20	STAND,BASE	HIPS	01	1200025231
21	SCREW 4x10 BT TRUSS		04	1100040826
22	SCREW 4x12 BT WASHER		06	1100053034
23	SCREW 4x10 BT BLACK		21	1100004224
24	DECO BOARD		01	1200030420
25	LENS,SMOKE GRAY	PMMA	01	1200029256
26	7KEY KNOB ASSY		01	1200029257
27	SCREW 4x16BT BLACK		06	1100004229
28	SCREW 4x14BT BLACK		02	1100041353

**NOTE: FOR FURTHER DETAILS REFER
INDIVIDUAL BOM / WORK INSTRUCTION**

[illegible]