

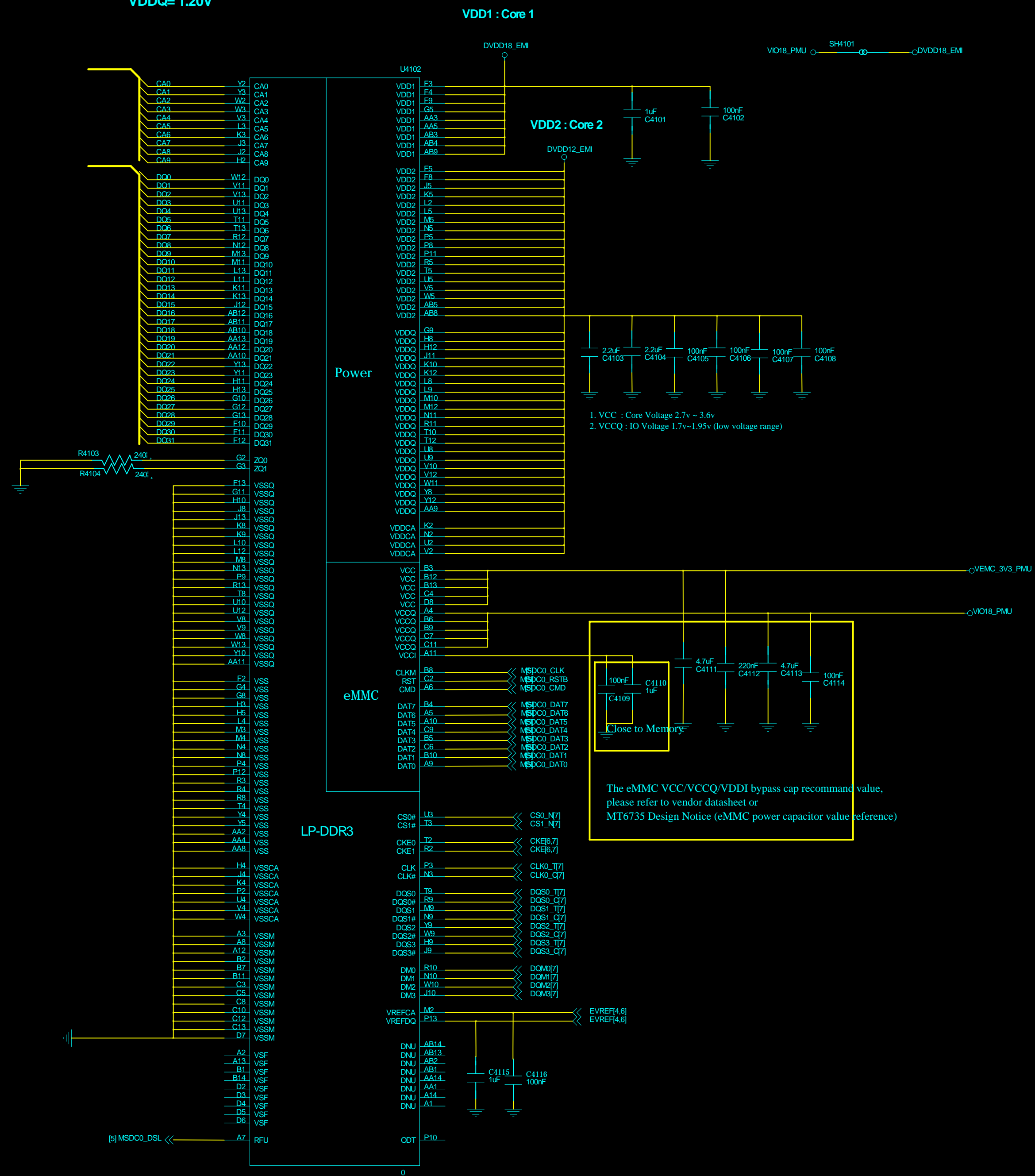


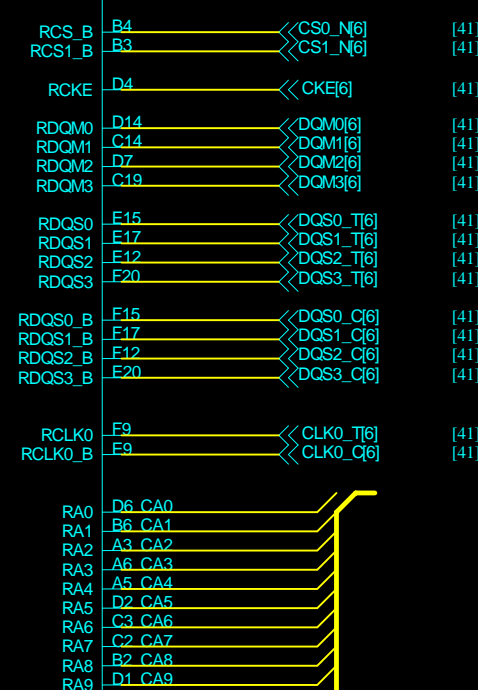
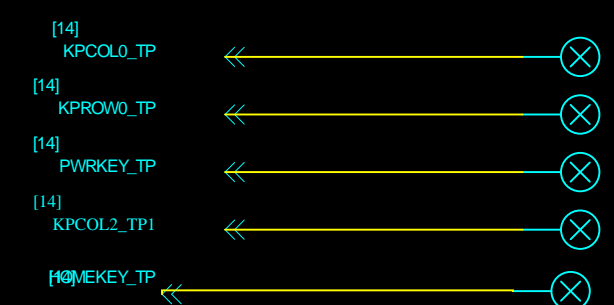
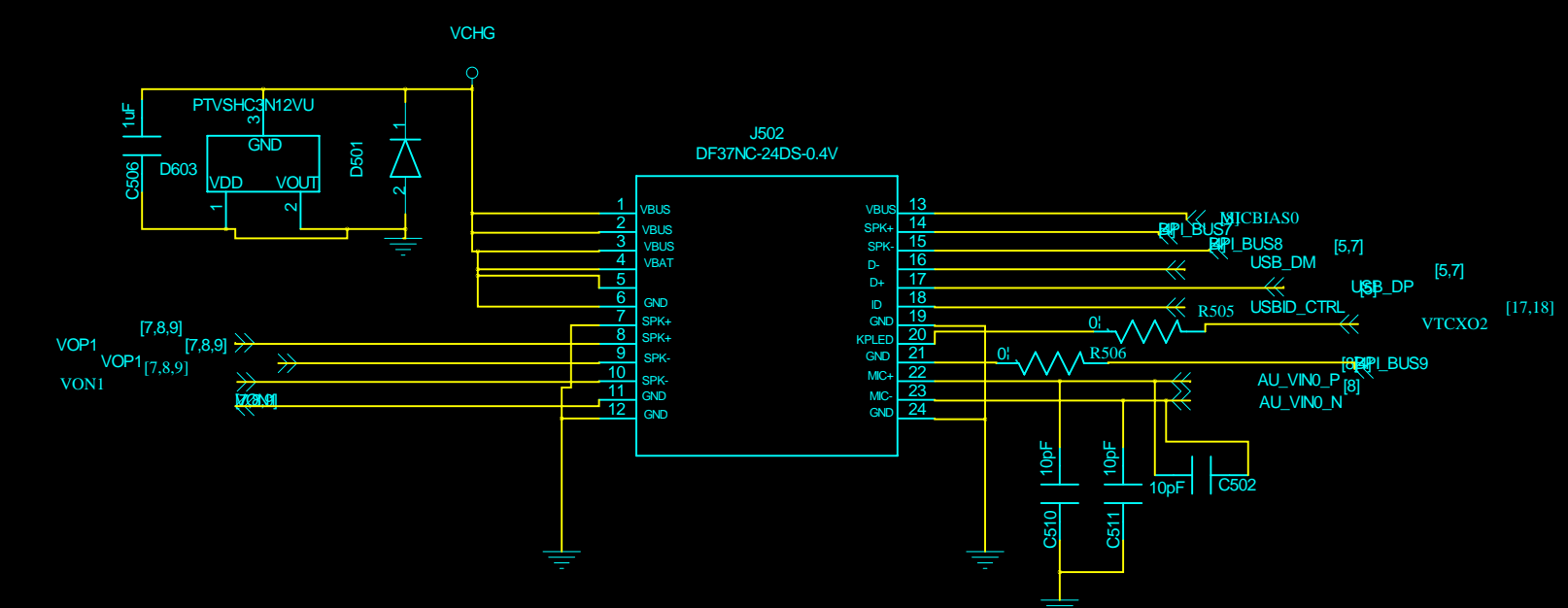
eMMC+LPDDR3 8GB eMMC + 8Gb LPDDR3

Hynix/H9TQ64A8GTMCUR-KUM

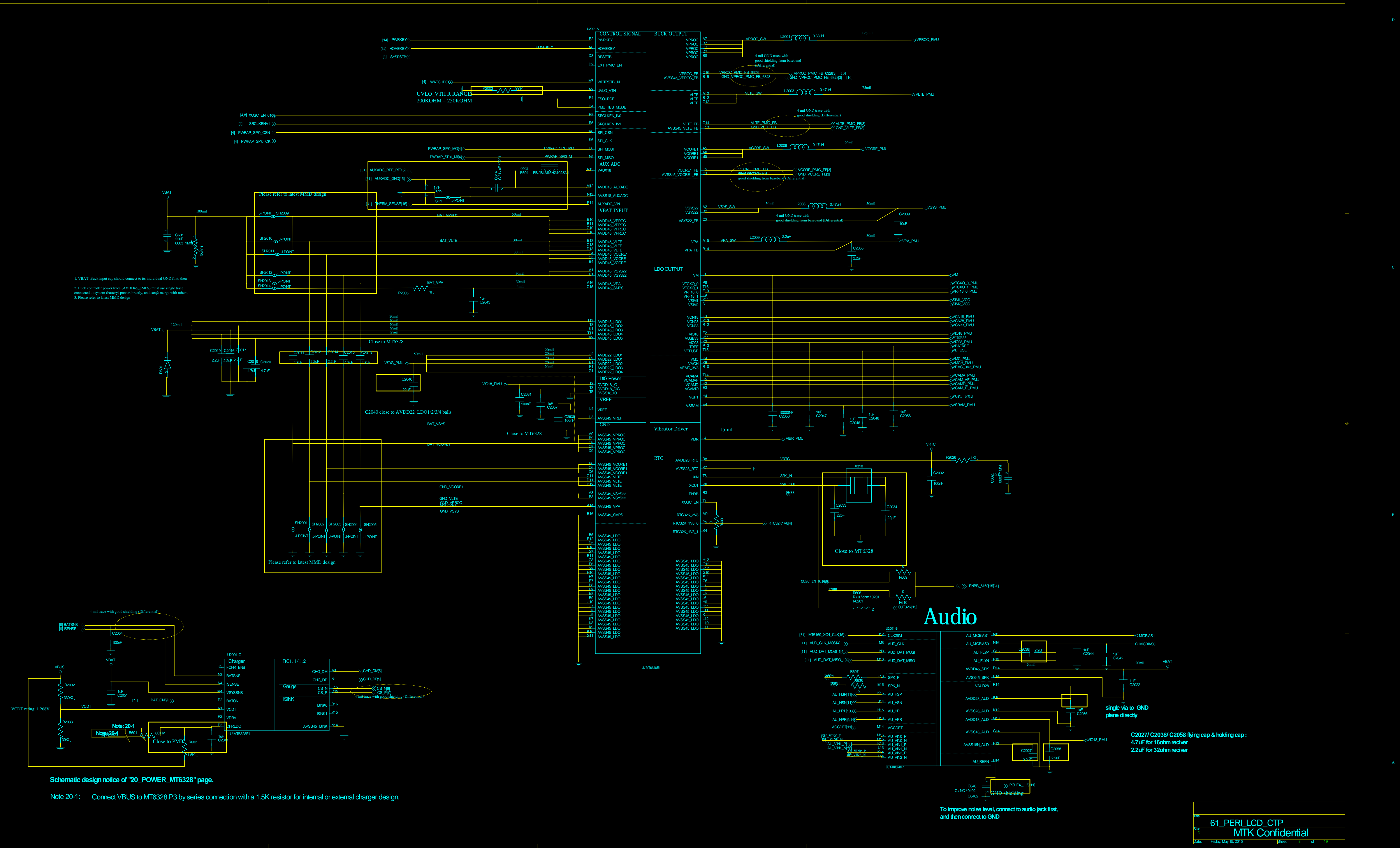
221 Ball, 0.5mm pitch

VDD1=1.8V
VDD2=1.20V
VDDCA=1.2V
VDDQ= 1.20V





Title	13_BB_3		
Size	D	MTK Confidential	
Date:	Tuesday, December 22, 2015	Sheet	7 of 19



[illegible]

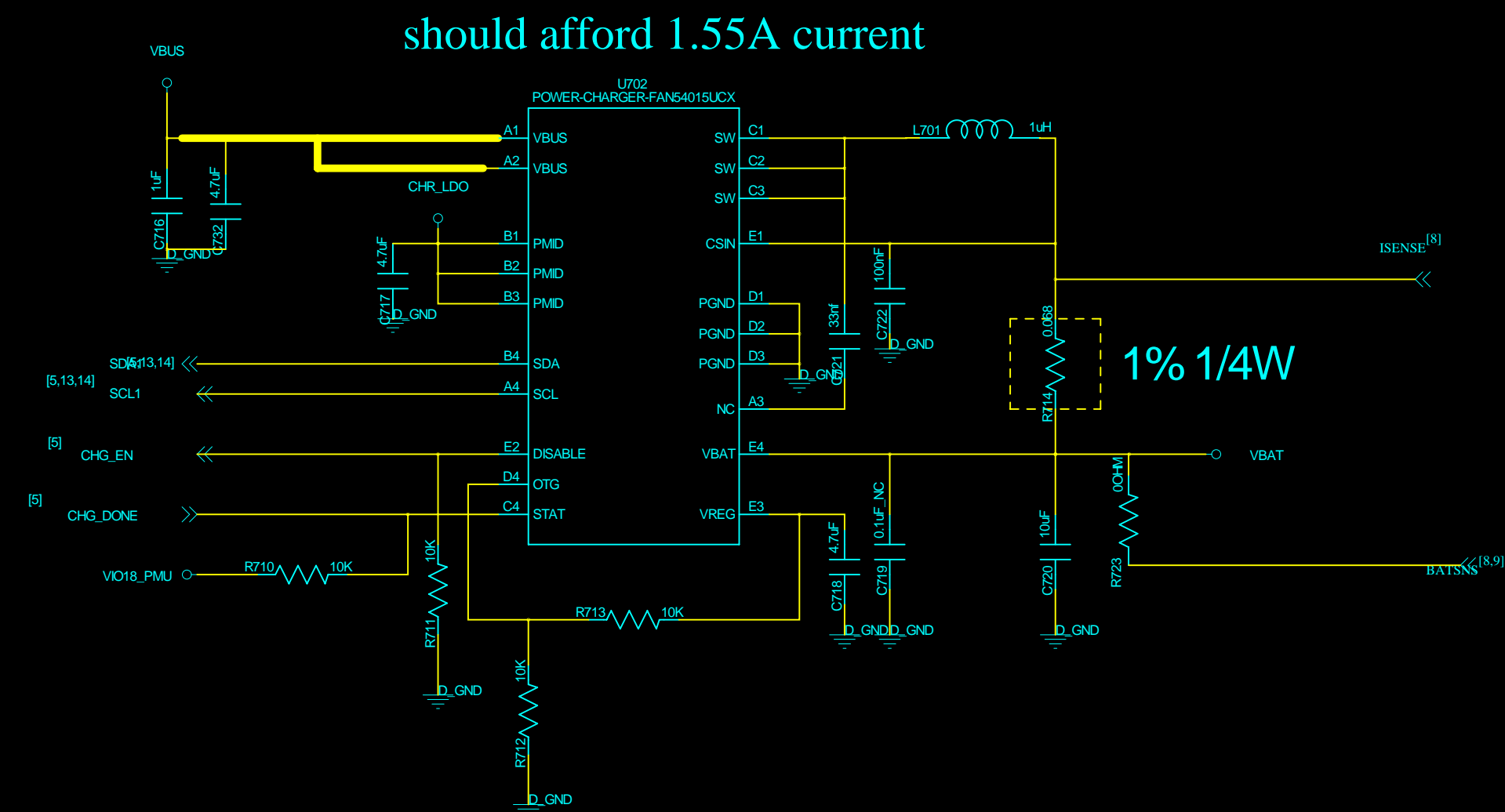
Note 64-1: The equivalent capacitance of USB2.0 ESD protection device must be $\leq 3\text{pF}$.
For D+/D- 2-ch TVS device is also available for smaller layout area

BATTERY

Battery NTC=10K, R2103 select 16.9K, 1%
Battery NTC=47K, R2103 select 61.9K, 1%

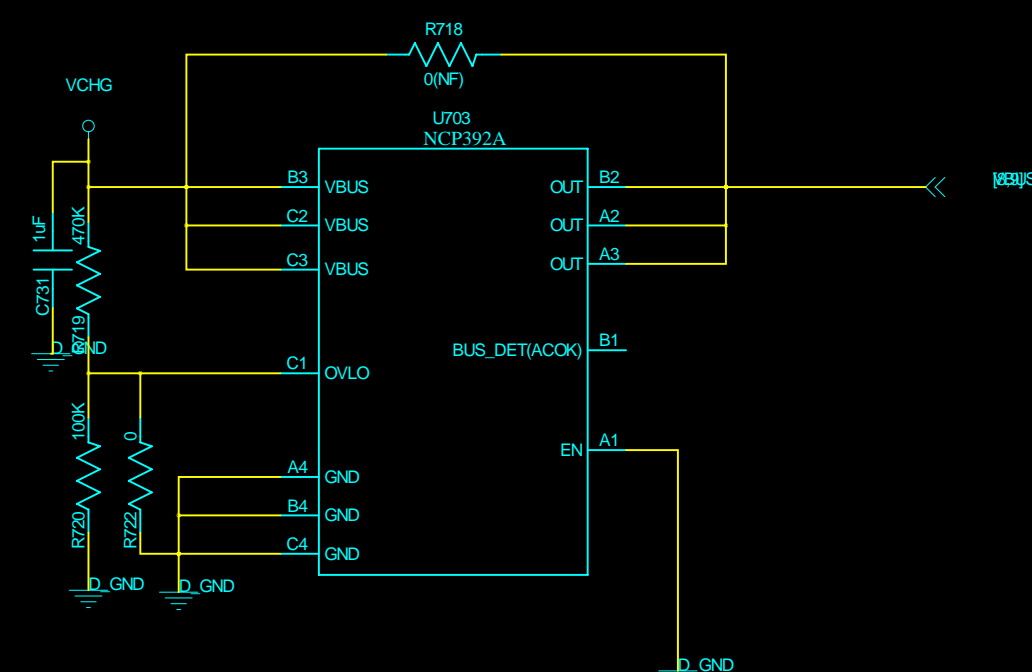
From MT6328

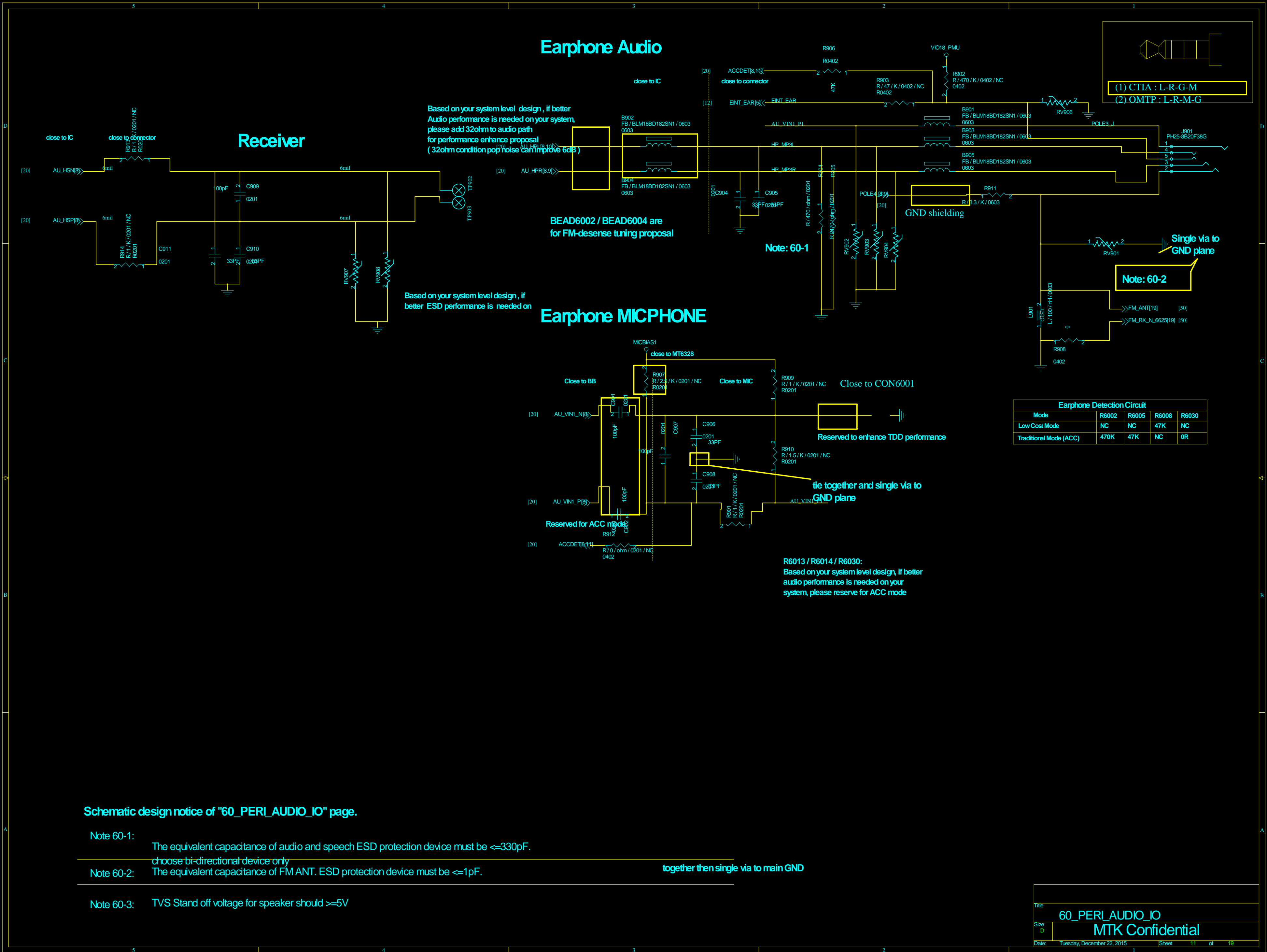
... TEAM



should afford 1.55A current

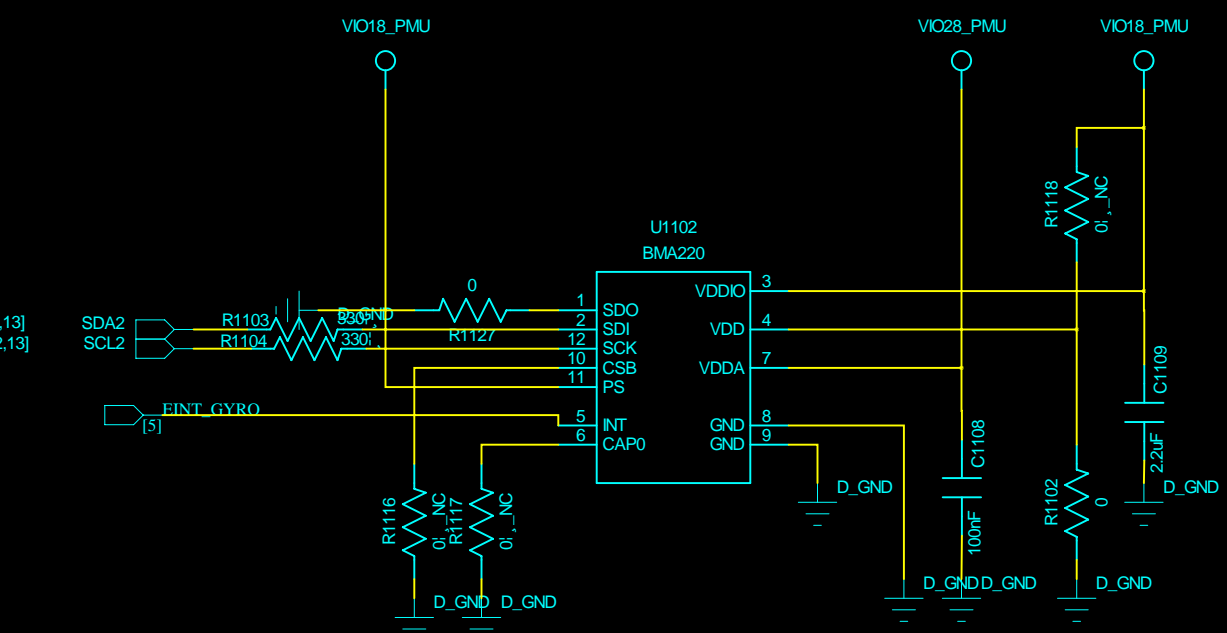
1% 1/4W





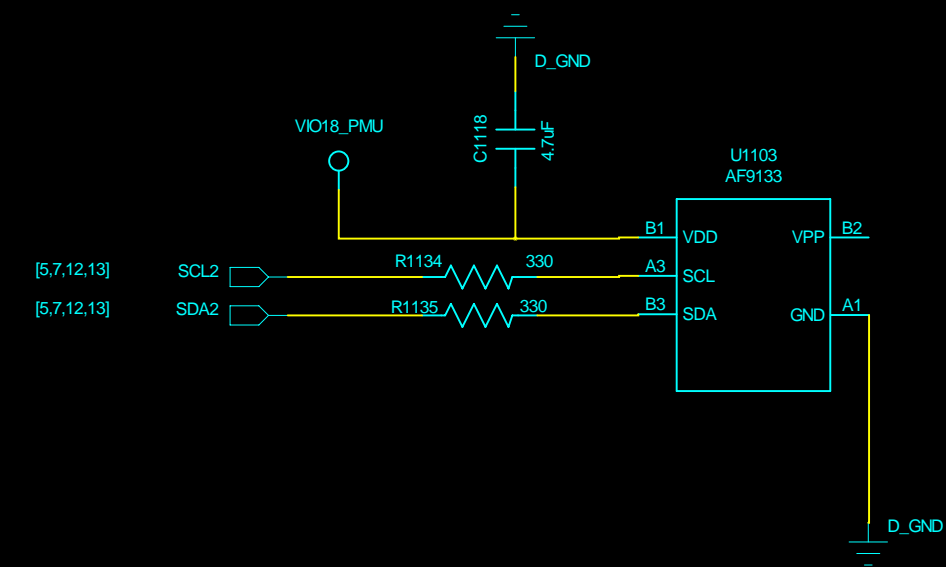
5.5" HVGA LCM & CTP

G Sensor



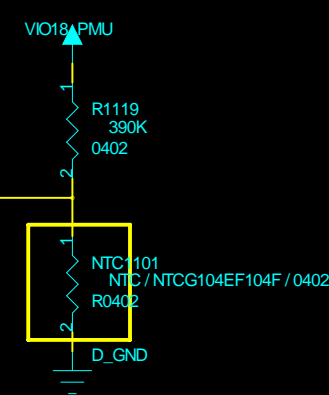
M Sensor

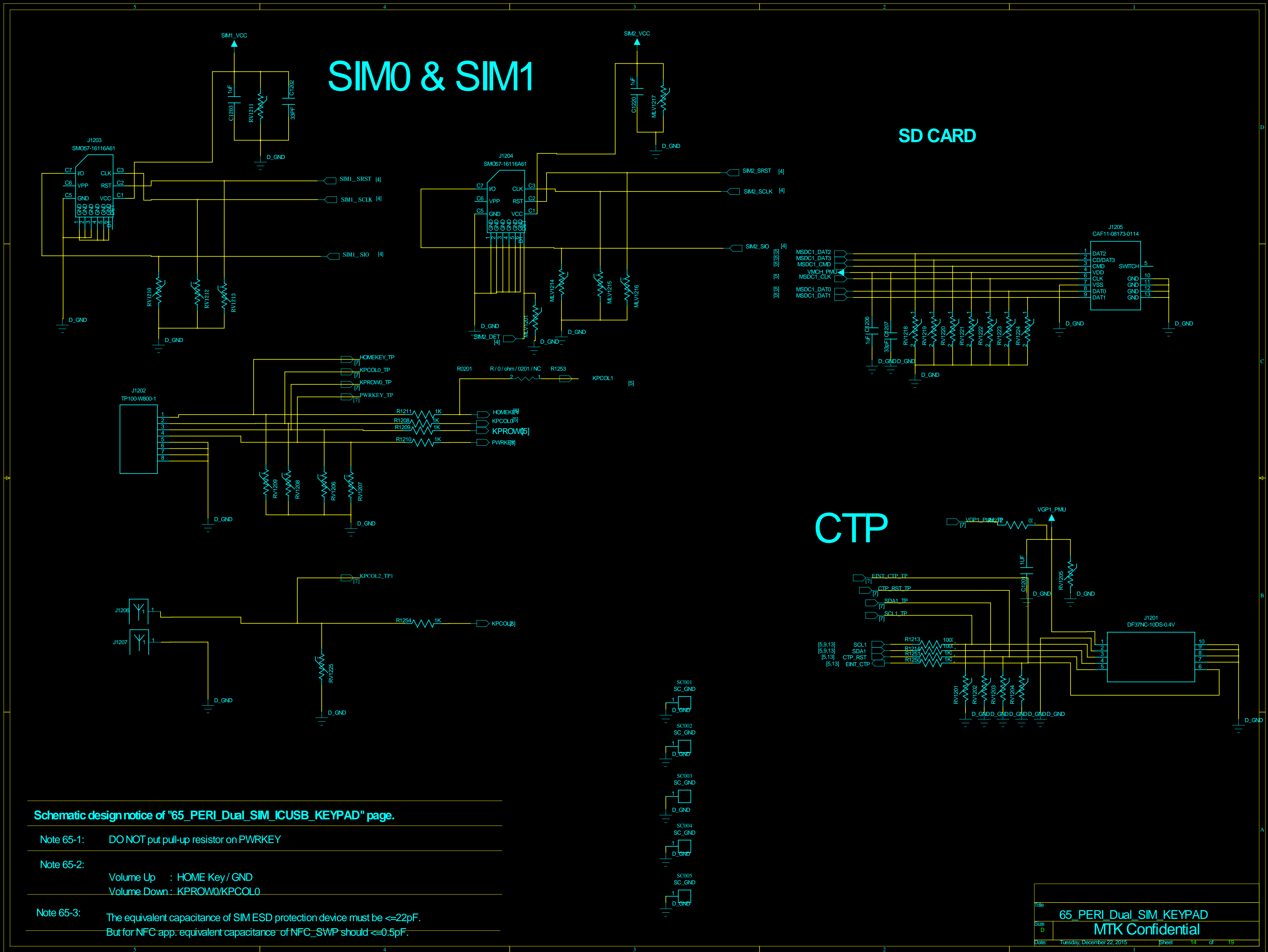
M Sensor

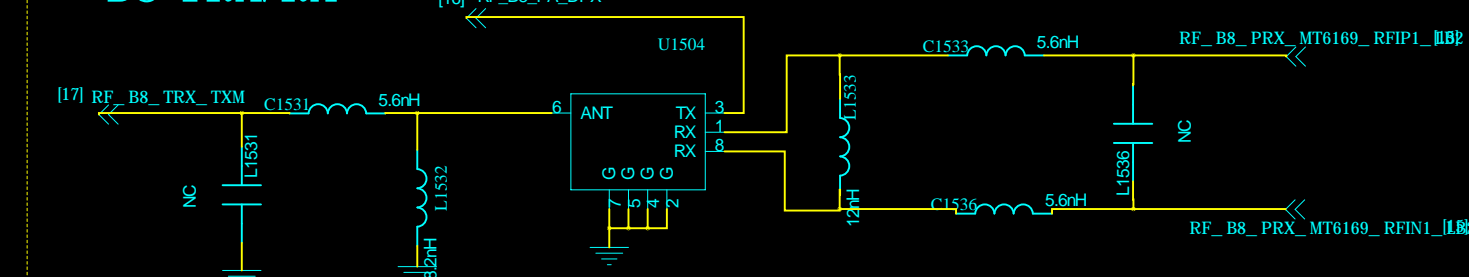
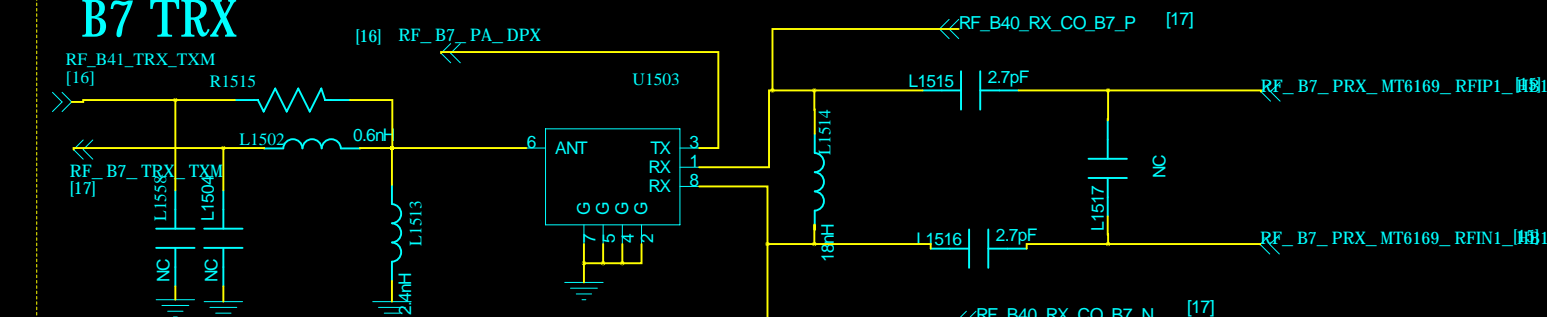
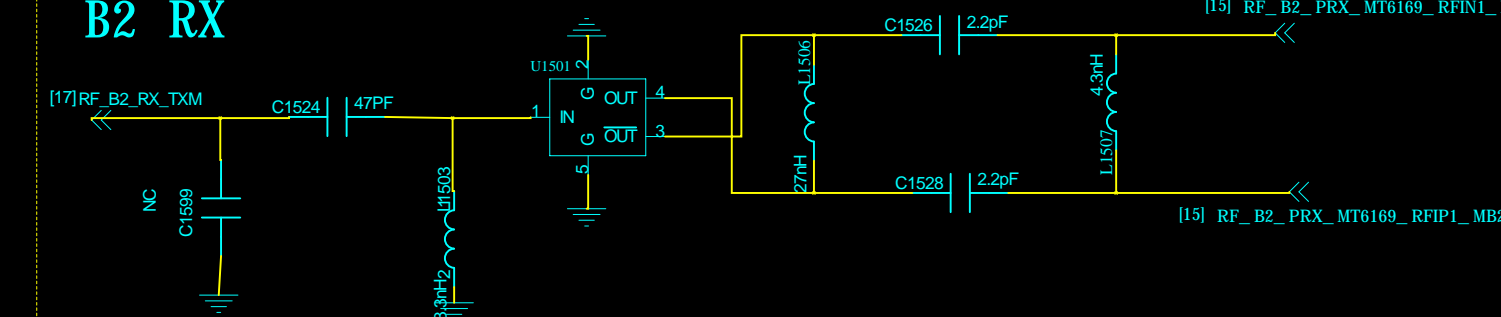
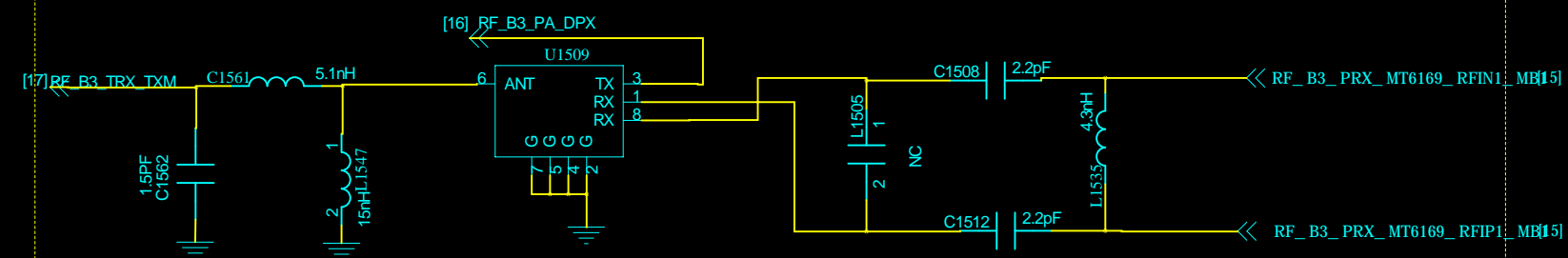
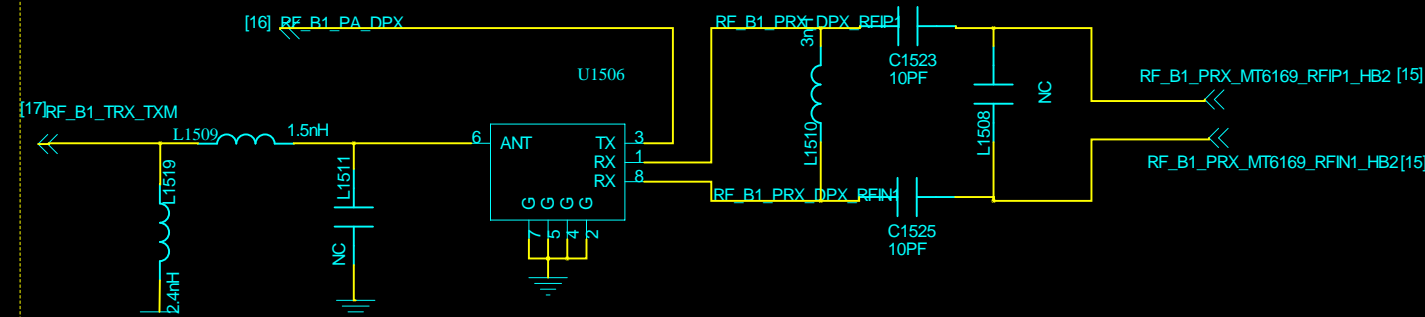
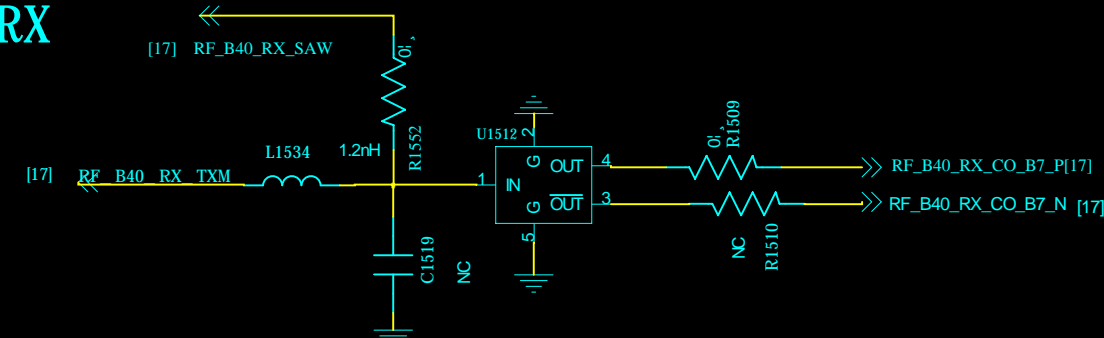
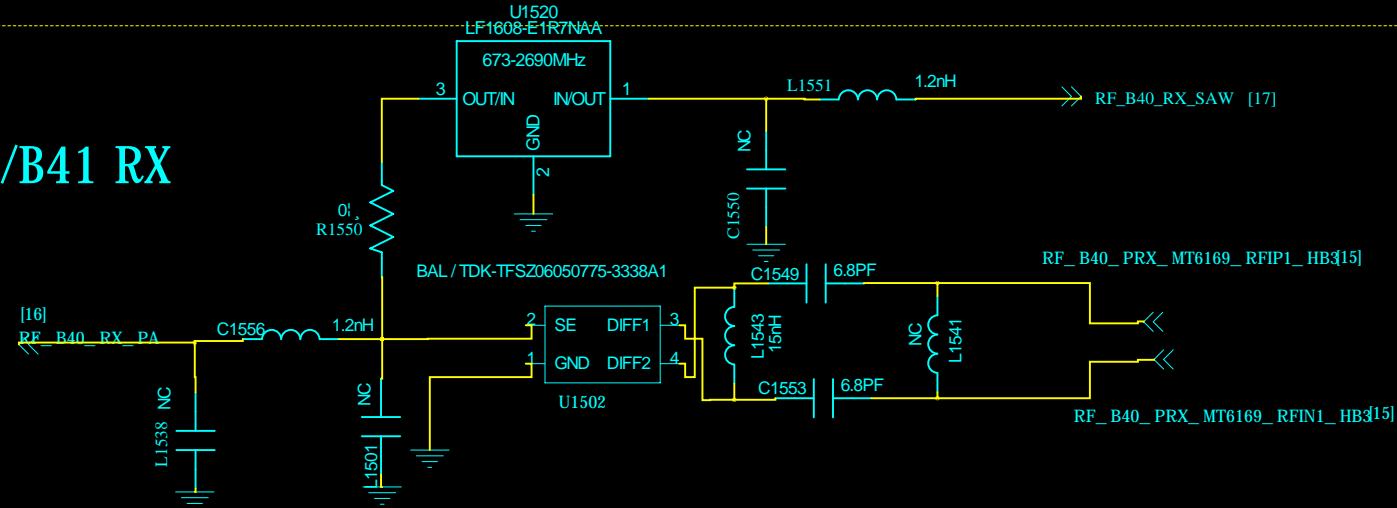
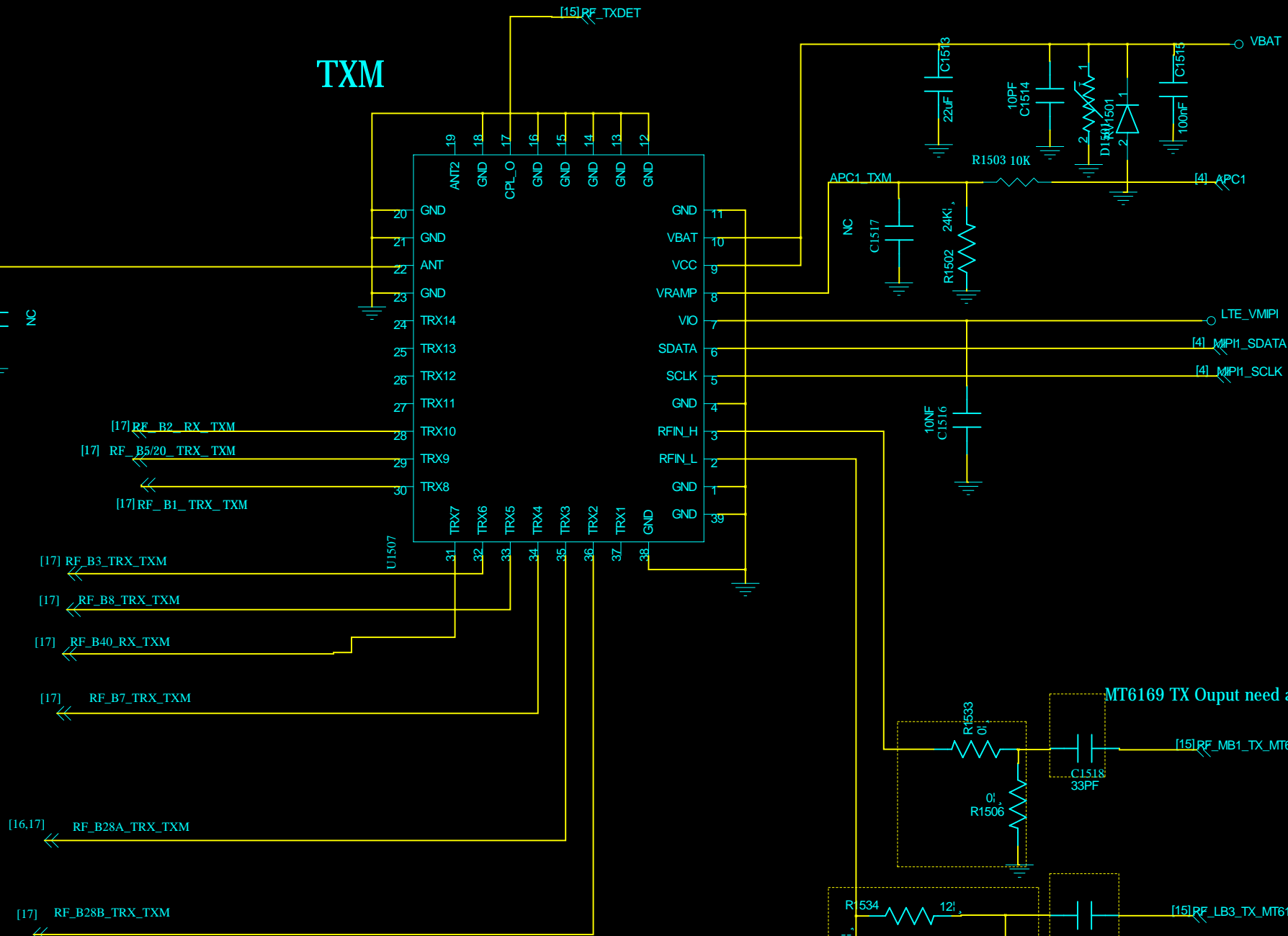
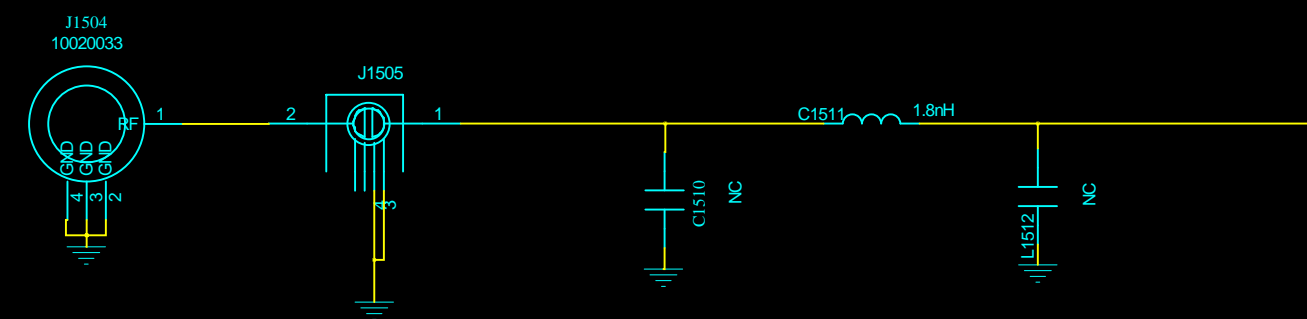


Thermistor / To sense board level temperature

NTC6301 close to BB ,and located in the same layer
(can refer to thermal design notice)

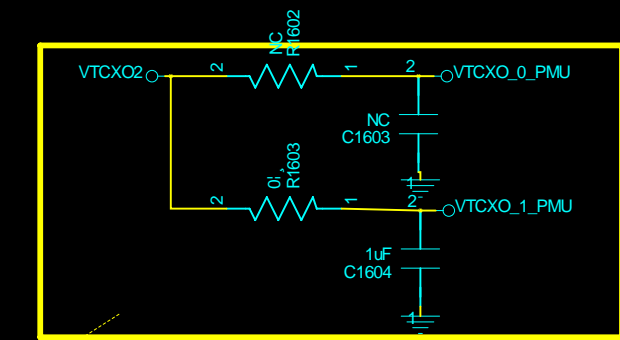
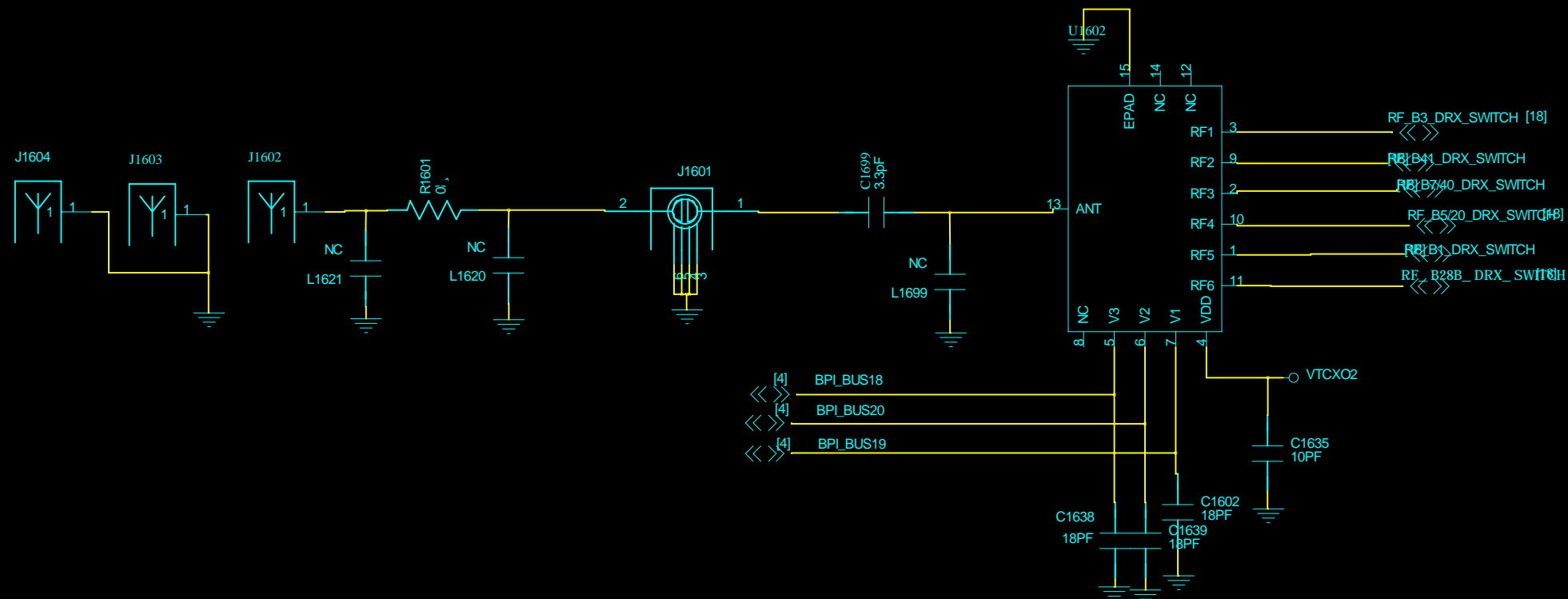






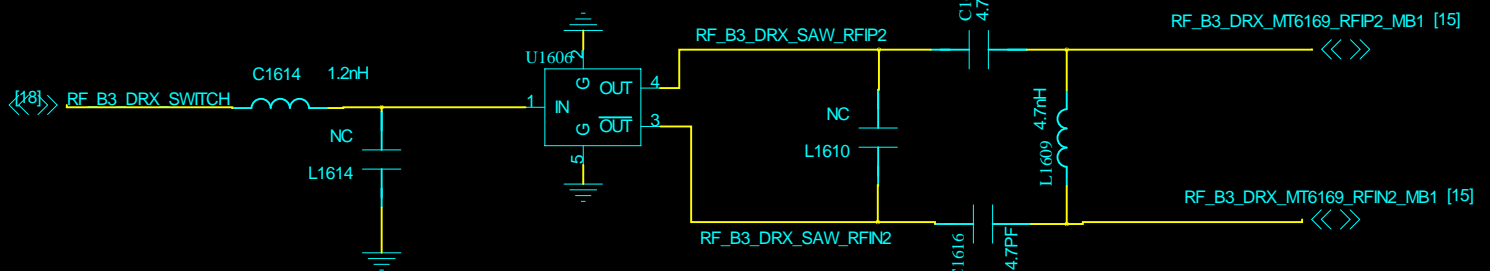
DRX ANT DRX Car Kit

SP6T

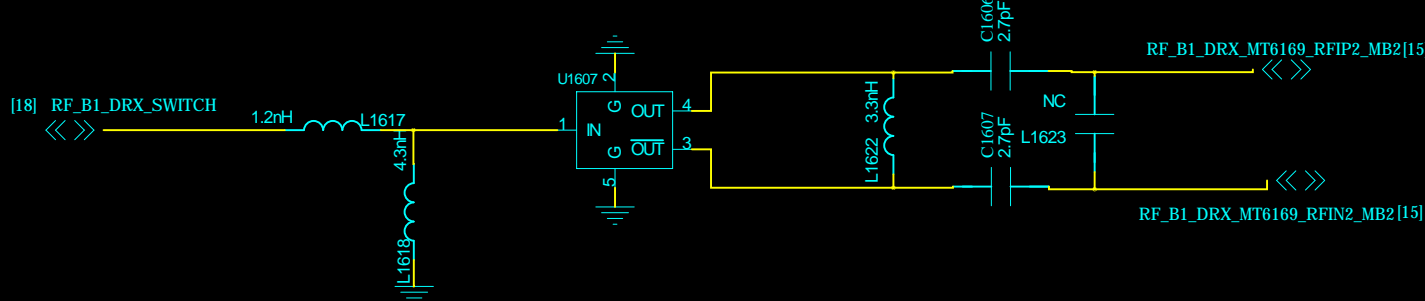


For power VTCX02 star connection

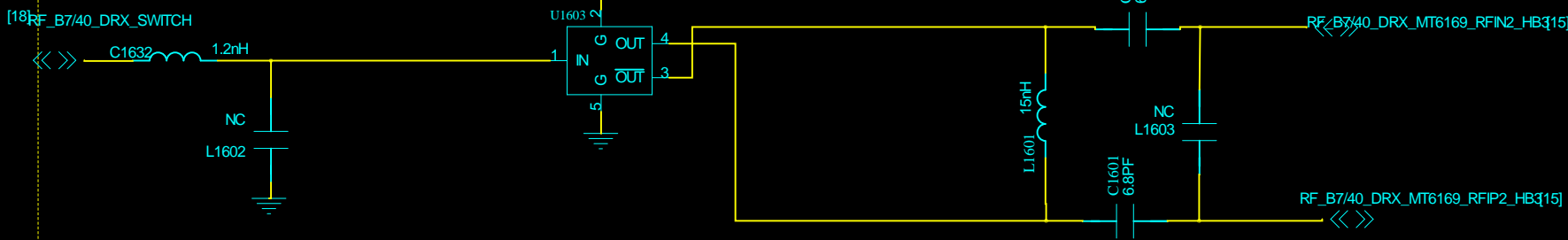
B3 DRX



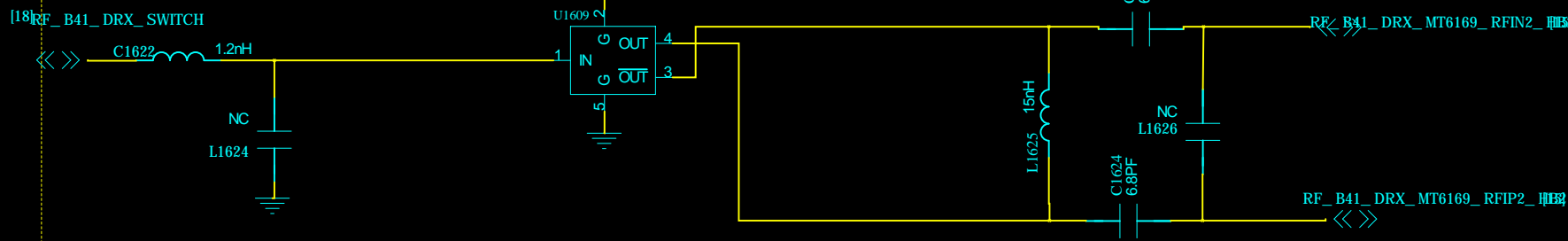
B1/4 DRX



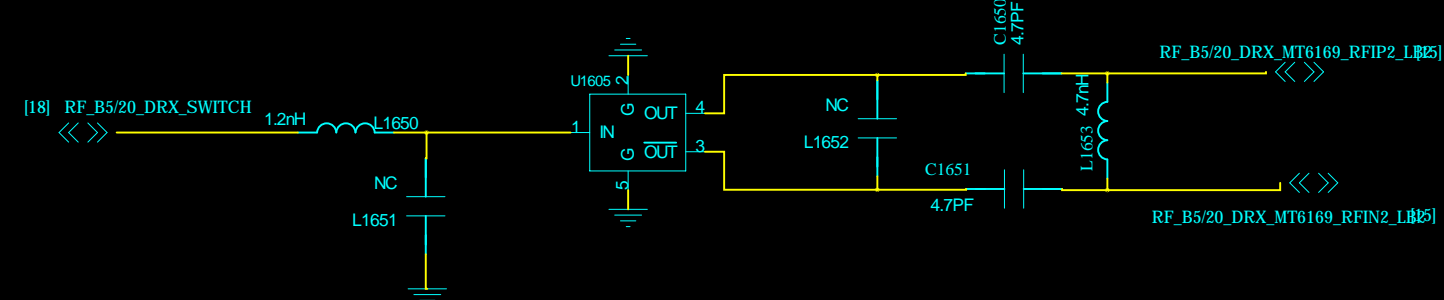
B7/40 DRX



B41 DRX



B5 DRX



B28A/B OR B20 DRX

